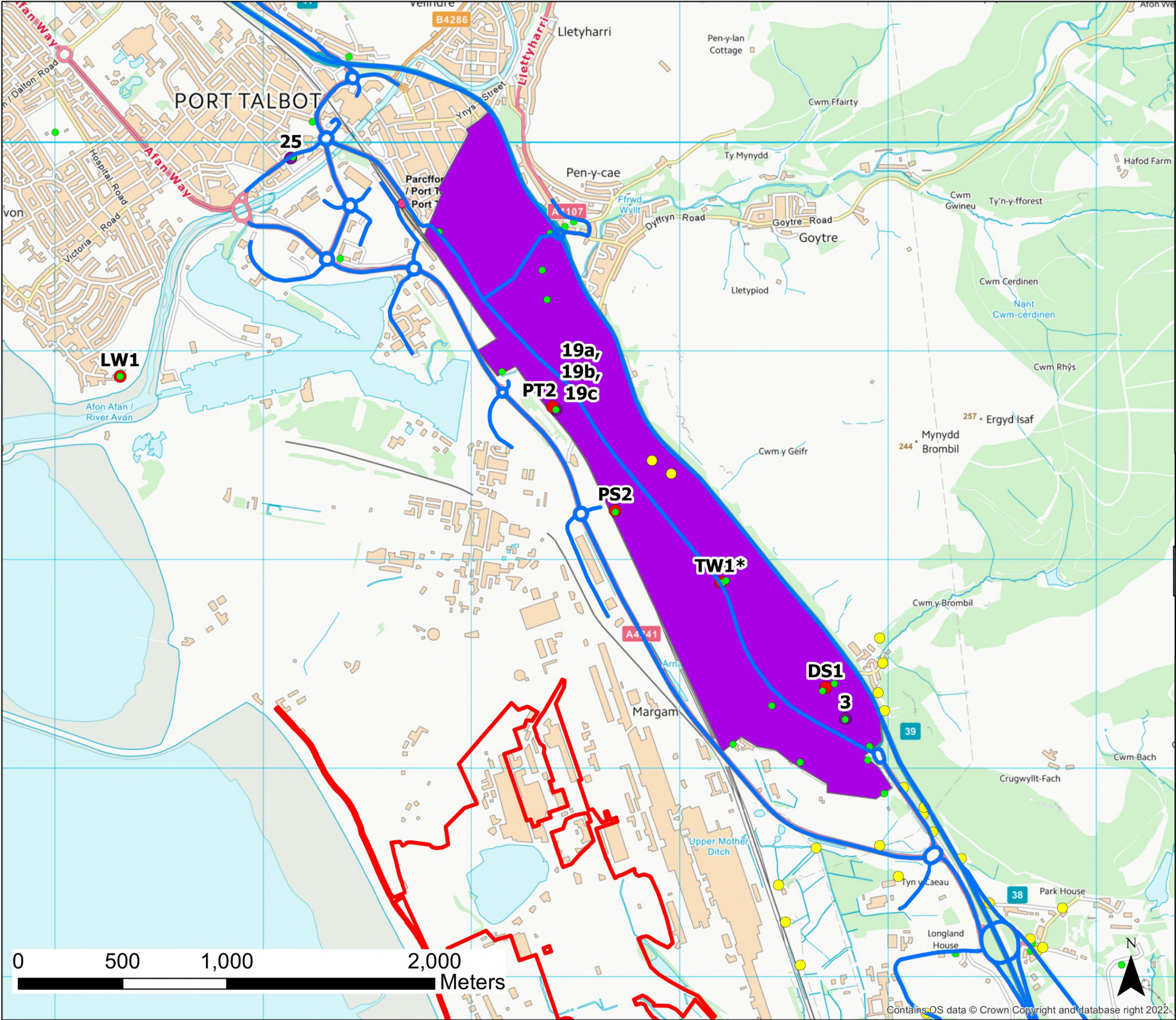


Drawn by: Harry Porter

Approved by: Daniel Mullick



### Legend

- Modelled Road Network
- Ecological Receptor Locations
- Human Receptor Locations
- Automatic Monitoring Location
- Diffusion Tube Location
- Site Redline Boundary
- AQMA Boundary

### Copyright information

Contains Ordnance Survey Data © Crown copyright and database right 2023

### Purpose of Issue:

FINAL

### Client name

Tata Steel

### Project Title:

Project EAF

### Drawing Title:

Air Quality Study Area  
Showing AQMA Boundary

### Temple Internal Job number:

T10584

Brunel House  
2 Fitzalan Road  
Cardiff  
CF24 0EB

ES Figure 6.5



| Rev | Date       | Description | Drn | Chk | App |
|-----|------------|-------------|-----|-----|-----|
| 00  | 20/08/2024 | First Issue | CJ  | MC  | MC  |

664195 - Electric Arc Furnace



TITLE: Figure 6.5:  
Modelled road network, ecological and  
human health receptors, diffusion tubes  
and AQMA boundary

ID:P664195\_Figure 6.5

REV 00