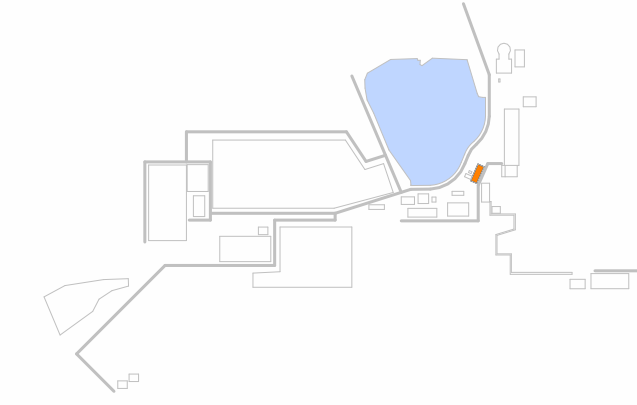
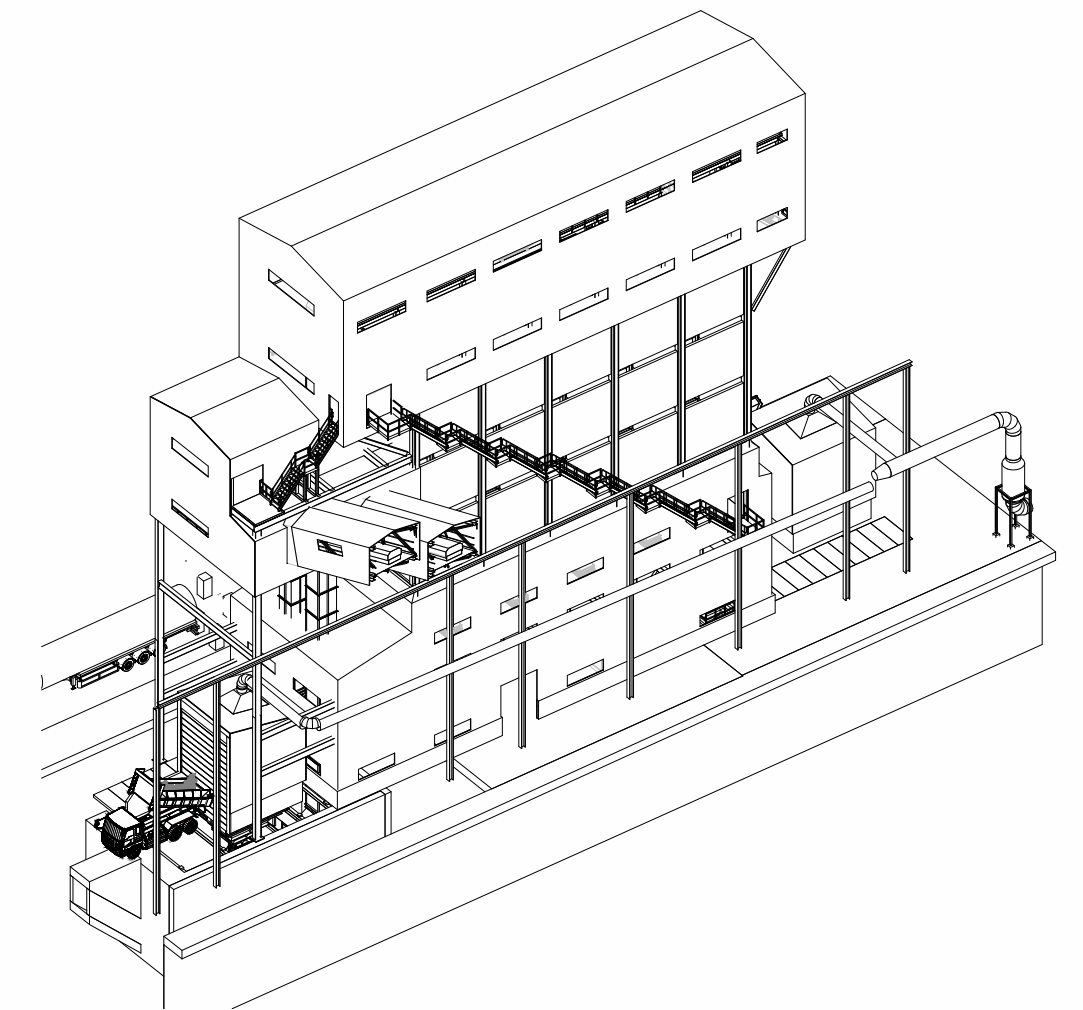
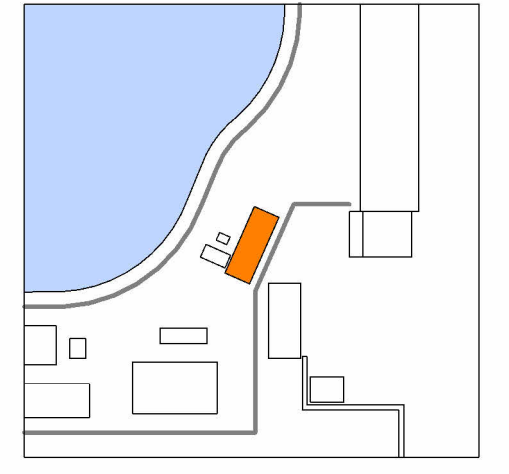


Construction (Design and Management) Regulations
 Design risk assessments are carried out throughout the design stage of this project in accordance with company procedures and manuals. Where reasonably possible all areas of risk applicable to design and end use of the construction have been identified and then eliminated, mitigated or recorded as a residual risk. Note that general risks of which a competent designer or contractor should be aware are not included. This drawing is to be used in conjunction with the Pre-construction Information and all related documents prepared in accordance with the current Construction (Design and Management) Regulations 2015 and all applicable Health and Safety legislation as currently amended.

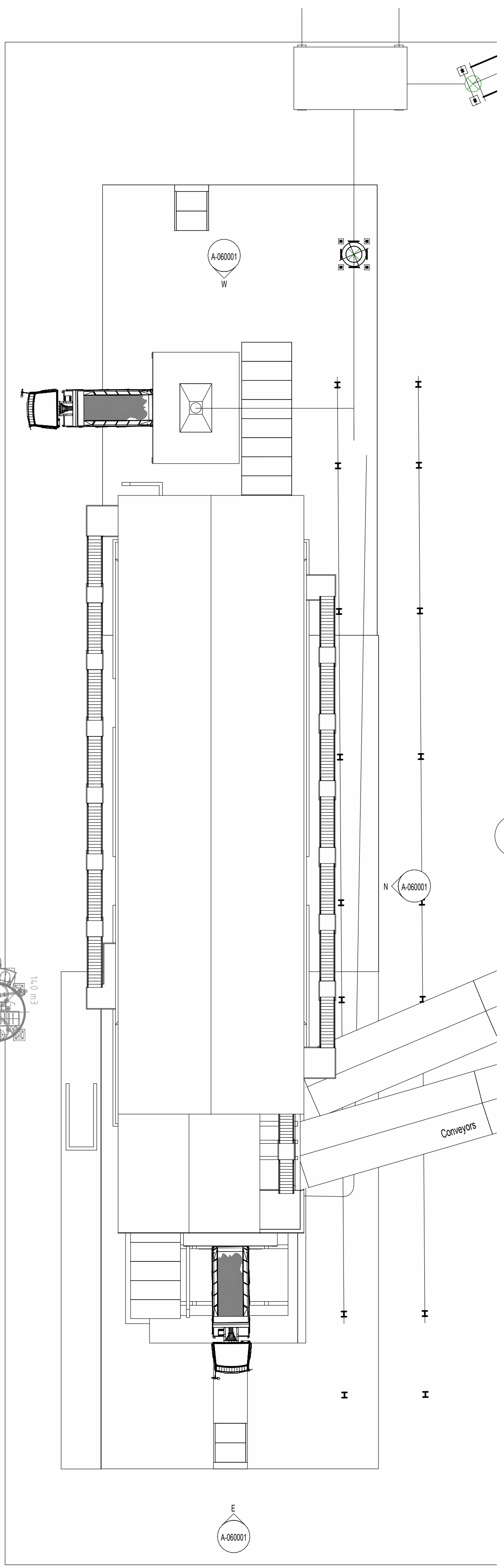
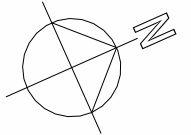


Bunkers to store Hot Briquetted Iron, which is used to create a favourable steel chemistry. Lime and dolomite are used to create the slag layer, which removes impurities in the hot metal

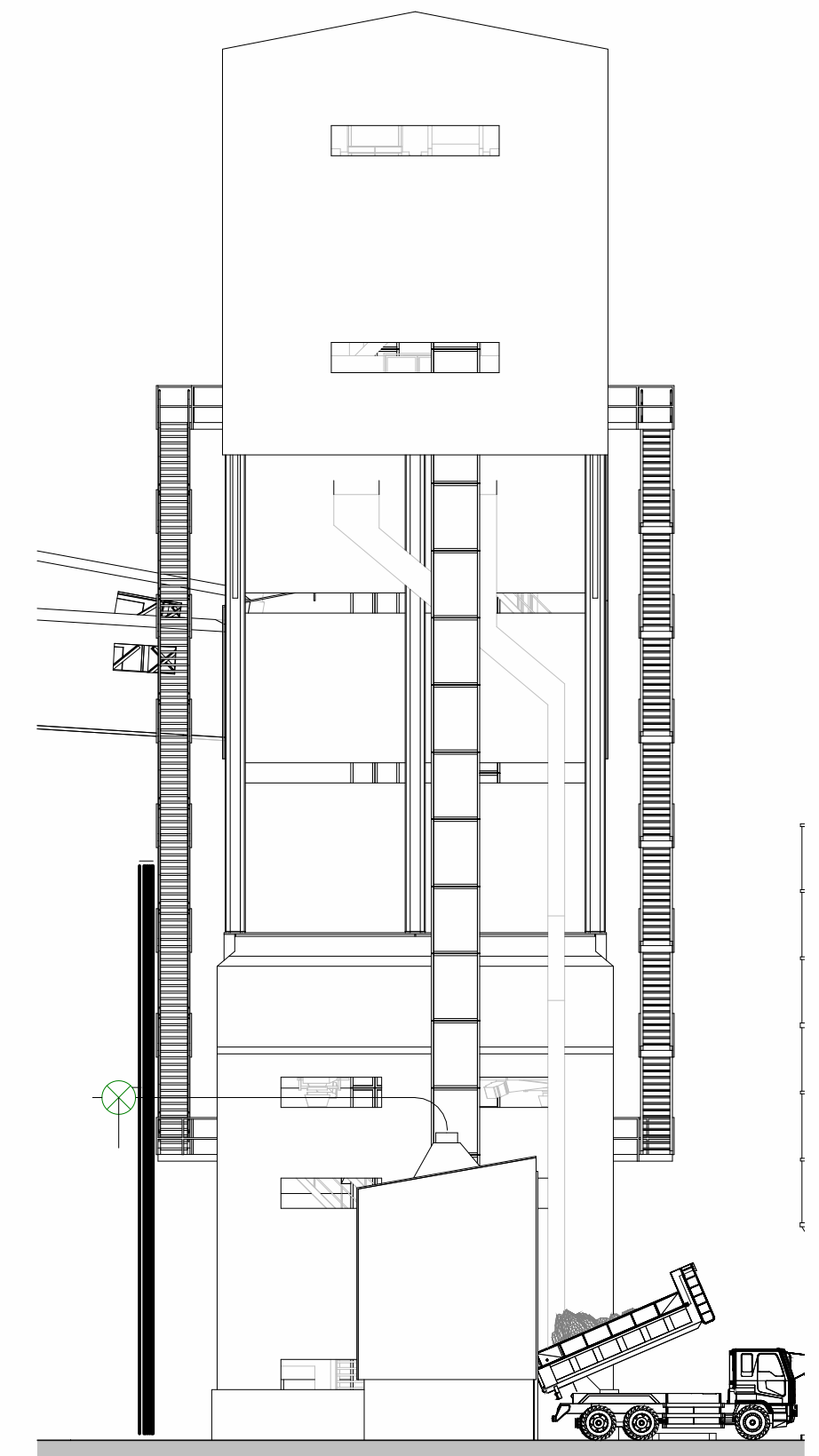


3D Unit 05 - 3D View

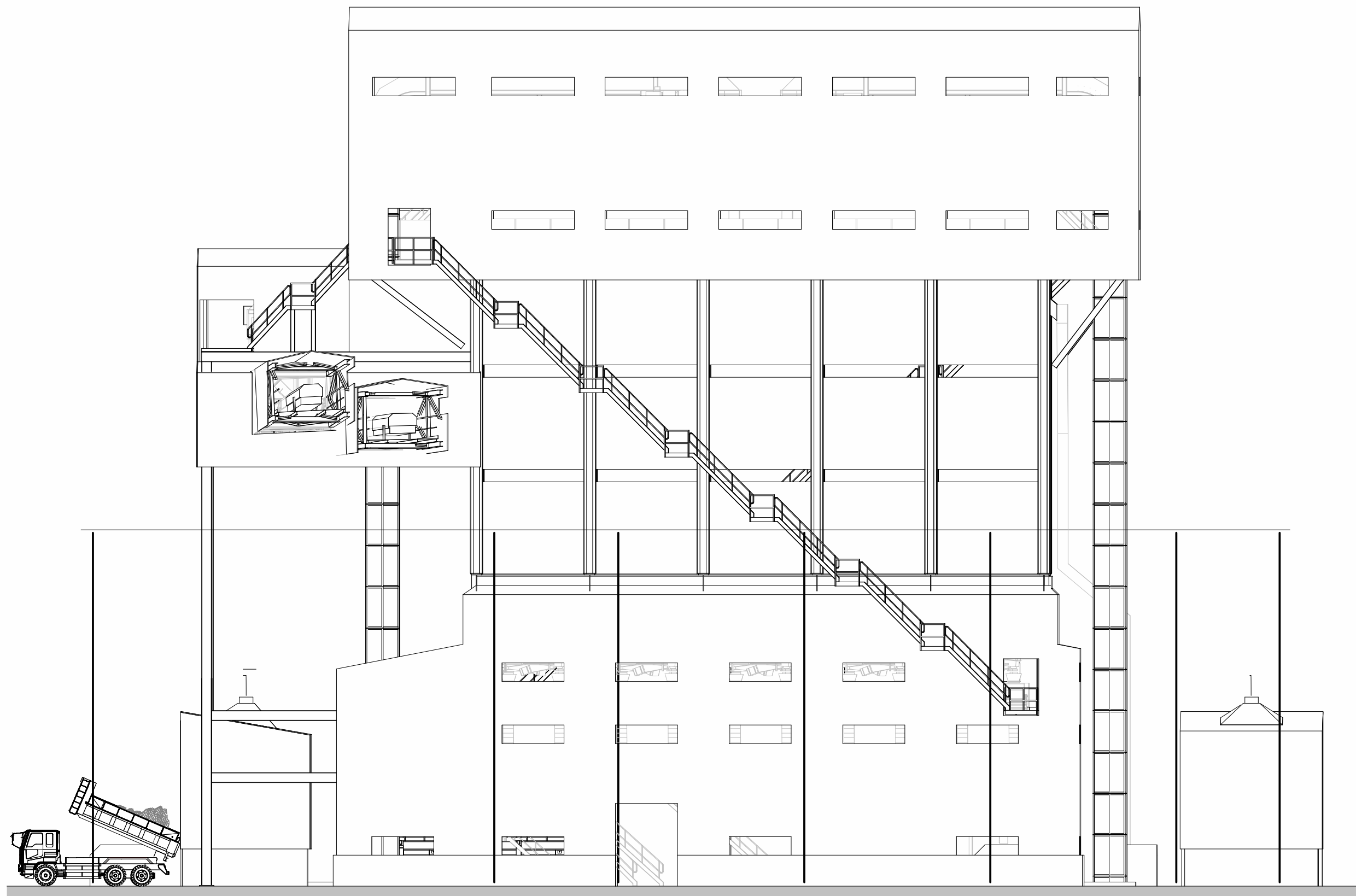
P03	Updated following NPT comments	05/09/2024
P02	Issue to NPT	23/08/2024
P01	Incorporating TUR Comments	15/07/24
P00	Initial Issue	28/05/24
REV.	DESCRIPTION DRAWN BY CHECKED BY APPROVED BY	DATE
RIBA PLAN OF WORK WORKSTAGE	LEVEL OF MODEL DEFINITION (LoD)	
Stage 3 - Spatial Coordination	LoD 3 - Approximate Model	
PURPOSE OF ISSUE - SUITABLE FOR...	STATUS or SUITABILITY	
Planning Submission	Status S2 - Delivery Team Information	



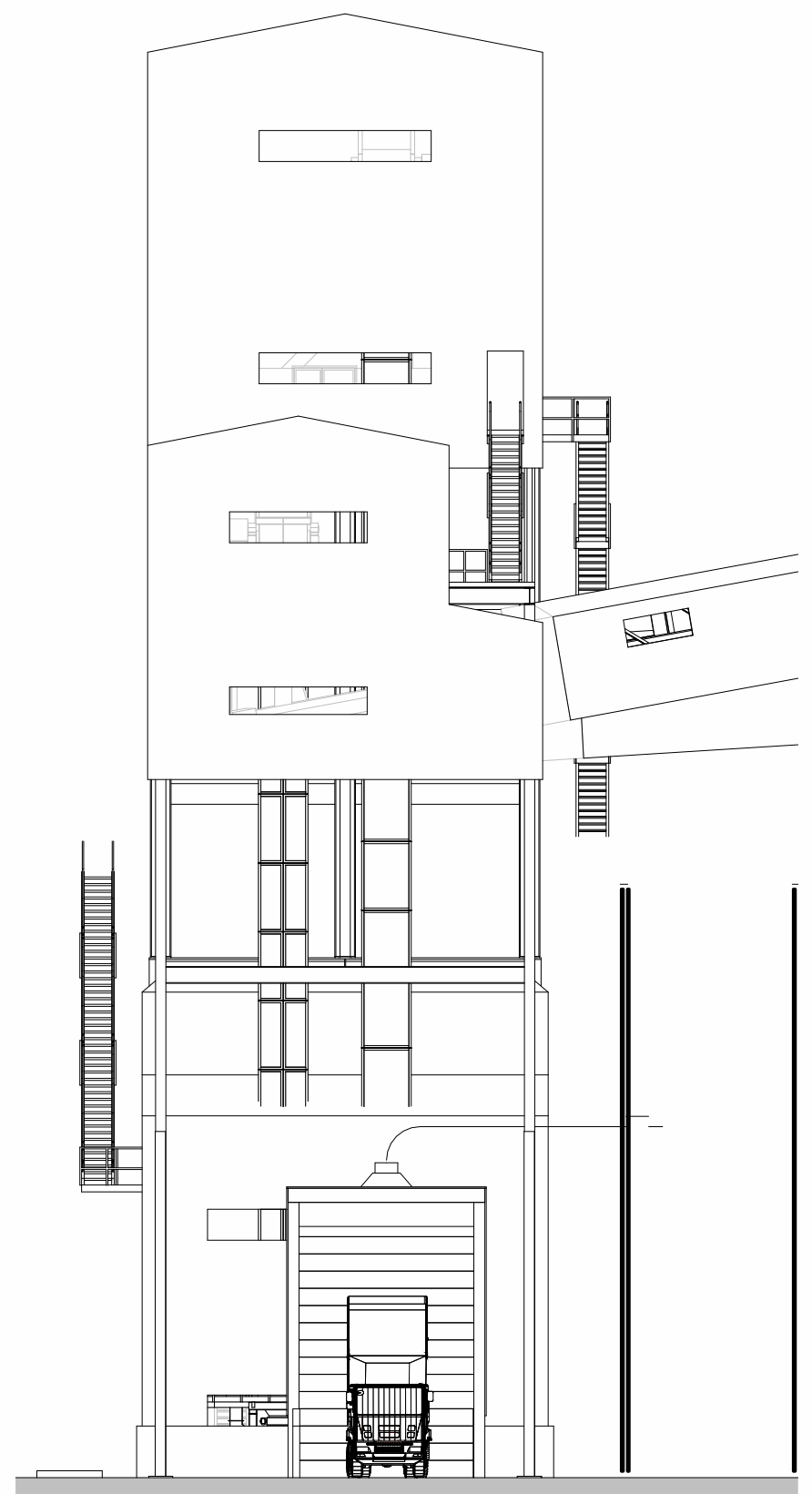
P Unit 05 - Hot Briquette Iron Dolo & Lime Bunker
 1:200



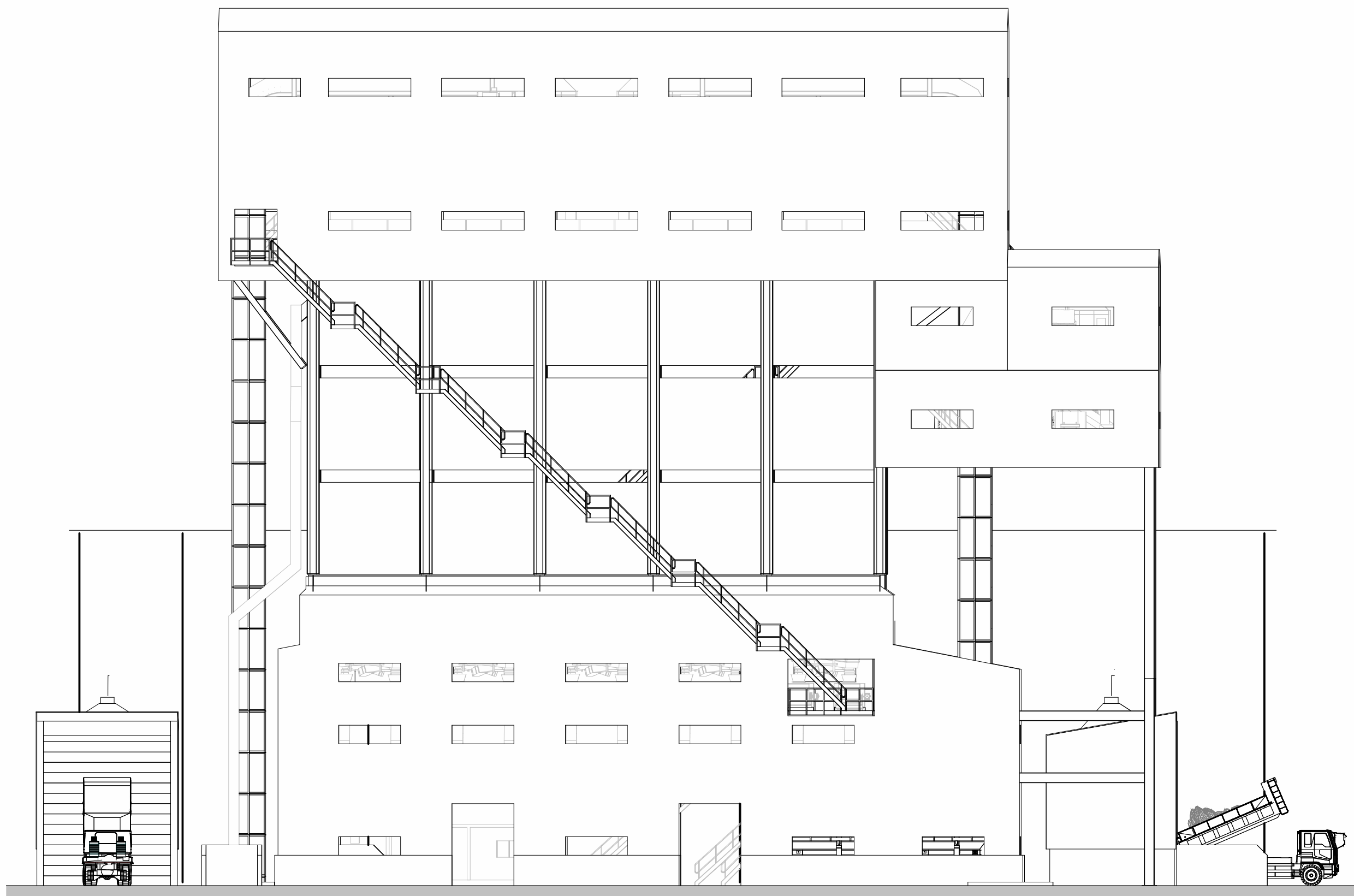
W West Elevation
 1:200



N North Elevation
 1:200



E East Elevation
 1:200



S South Elevation
 1:200



CARDIFF 029 2052 8140
 LONDON 0207 138 3560
 WREXHAM 01978 357 887
 www.lawray.co.uk
 CLIENT
 Tata Steel UK Ltd.

PROJECT TITLE
 EAF PROJECT, PORT TALBOT

DRAWING TITLE
 Unit 05 - Hot Briquetted Iron Dolo & Lime Bunker - Proposed GAs

PROJECT No	SCALE @ A1
20007	As indicated
DRAWING No	REVISION
1100: Project Originator - Issue	Level - Type - Size - Number
1900: Project Originator - Functional - Spatial - Form - Discipline - Number	Revision - Description
+12/2018	
18/10/2018	
EAF-LAW-05-X-DR-A-060001	P03

DO NOT SCALE Any discrepancy or query concerning this drawing should be referred to the Architect.
 Copyright © LAWRAY LIMITED
 Registered Office: Greenmeadow Springs, 1 Cae Gwynedd, Trogwynn, CARDIFF CF15 7AB
 Reg. Co. No. 272417E, VAT Reg. No. 134 2146 06