

TRISOMET® U-VALUES

135mm Core = 0.15 W/m<sup>2</sup> K.  
120mm Core = 0.16 W/m<sup>2</sup> K.  
100mm Core = 0.20 W/m<sup>2</sup> K.  
80mm Core = 0.25 W/m<sup>2</sup> K.  
60mm Core = 0.33 W/m<sup>2</sup> K.  
40mm Core = 0.46 W/m<sup>2</sup> K.

Psi & f-Factor

Y = 0.103W/mK.  
f = 0.579

STATED CALCULATION RESULTS ARE DEPENDENT ON COMPONENTS  
BEING AS SHOWN  
Computer Modelled in Accordance with EN ISO 10211



Tata Steel retain the right to ammend  
the construction and technical specifications  
shown on this drawing without prior notice.



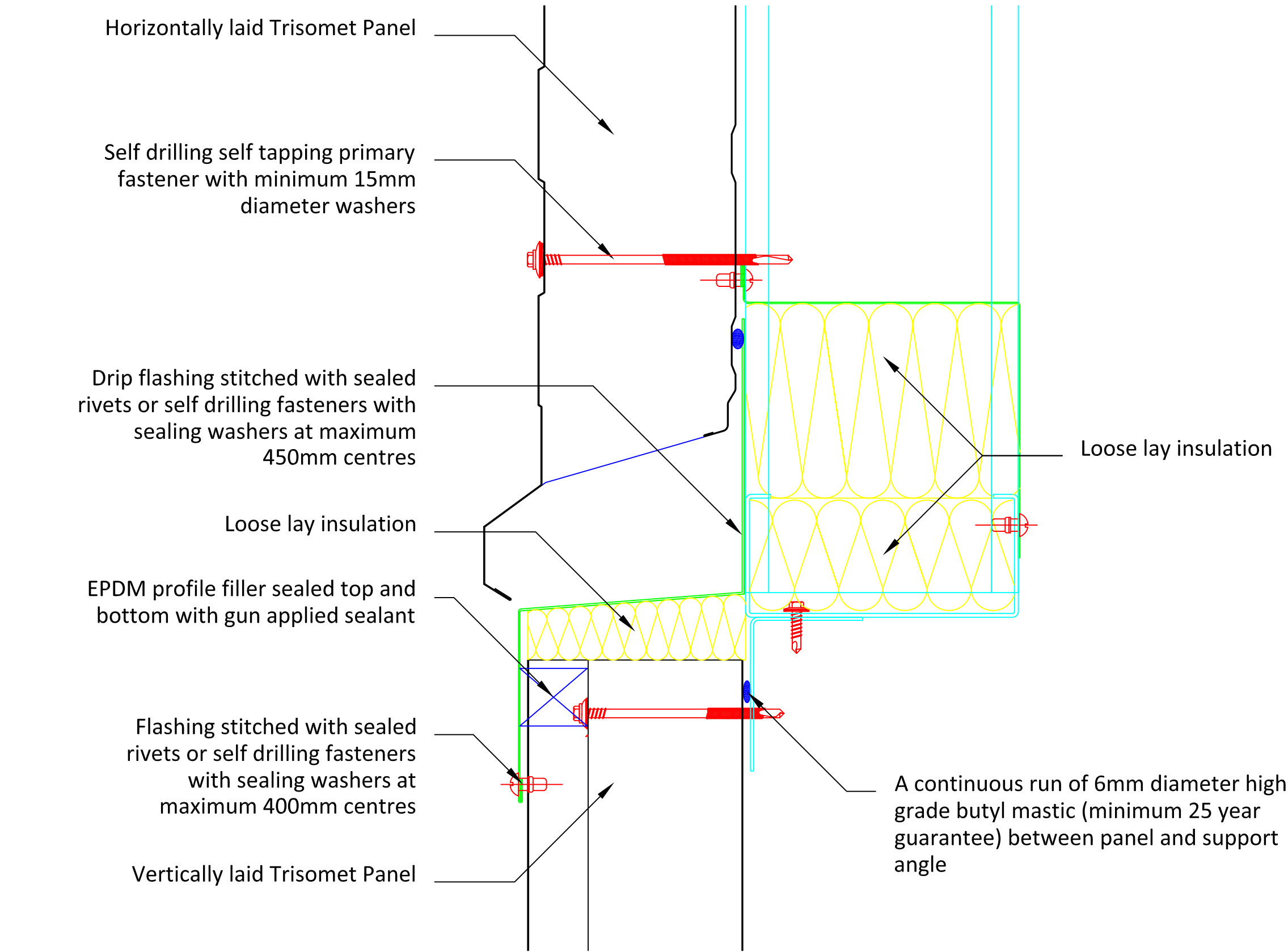
OFFICE TEL: 01244 892199  
TECHNICAL TEL: 01244 892133 / 34

www.tatasteelconstruction.com

PROJECT  
**TRISOMET® HORIZONTAL  
WALL DETAILS**

TITLE  
**VERTICAL TO HORIZONTAL BREAK**

DRAWN BY	GMc	SCALE	NTS
APPROVED BY	JCA	TOLERANCES	-
DATE	13/01/09	DRG. No.	E5-046-03-C



All support steelwork  
by others