

TATA STEEL



Colorcoat HPS200 Ultra™

Super durable, guaranteed performance pre-finished steel

Working together

Tata Steel is an international company providing steel products and services to customers worldwide. We stand for 'Value in steel' and through our technical excellence and understanding of our markets, we help our customers achieve results.

About Tata Steel's European operations

Tata Steel is one of Europe's leading steel producers, with steelmaking in the UK and Netherlands, and manufacturing plants across Europe. The company supplies high-quality steel products to the most demanding markets, including construction, automotive, packaging, lifting & excavating, energy and aerospace. Tata Steel works with customers to develop new steel products that give them a competitive edge. The combined Tata Steel group is one of the world's largest steel producers, with a steel capacity of more than 28 million tonnes and 75,000 employees across five continents.

Innovation and continuous improvement are at the heart of our performance culture. We aim to create value by offering a sustainable and value-added steel product range supported by unrivalled customer service. By working in partnership with you, we find the best solutions to meet your needs and help your business to perform.





Tata Steel is a customer focused, innovative solutions-driven company, which combines international expertise with local service. We manufacture, process and distribute steel products and services to customers worldwide. Tata Steel manufactures steel for various sectors including domestic appliances, manufactured goods, construction, packaging and many others as well as providing design, technology and consultancy services.

Our commitment to our customers

We will play our part in protecting and enhancing Tata Steel's reputation for sustainable business success combined with corporate citizenship. We are proud to be part of Tata Steel and are dedicated to understanding your business.

We will support you to perform in your market and grow together for the future by putting you first in everything we do.

Contents

				Colorcoat HPS200 Ultra™ by Tata Steel	04
				Huskisson dock grain store, England	06
				Nautical centre, The Netherlands	08
				RNLI technical base, Ireland	10
				Weston-Super-Mare pier, England	12
				Los Hornillos composting plant, Spain	14
				Greater Manchester waste facility, England	16
				Amoras sludge plant, Belgium	18
				Peacehaven waterworks, England	20
				Czjaka sewage plant, Poland	22
				Bulmers bottling plant, Ireland	24
				Banffshire distillery, Scotland	26
				Common sulphur project, Qatar	28
				Maltanskie aquapark, Poland	30
				Suwalki aquapark, Poland	32
				Sports centre, The Netherlands	34
				Huntstown powerstation, Ireland	36
				Enstedværket powerstation, Denmark	38
				St. Kilda powerhouse, Scotland	40

Colorcoat HPS200 Ultra™ for super durable applications

Colorcoat HPS200 Ultra™ pre-finished steel provides exceptional performance and corrosion resistance for building envelope applications. It is backed up with extreme testing and real world global data to demonstrate the best combination of excellent colour stability, gloss retention and outstanding durability.

Colorcoat HPS200 Ultra™ has been used in some of the most demanding applications around the world, this brochure showcases some of them.

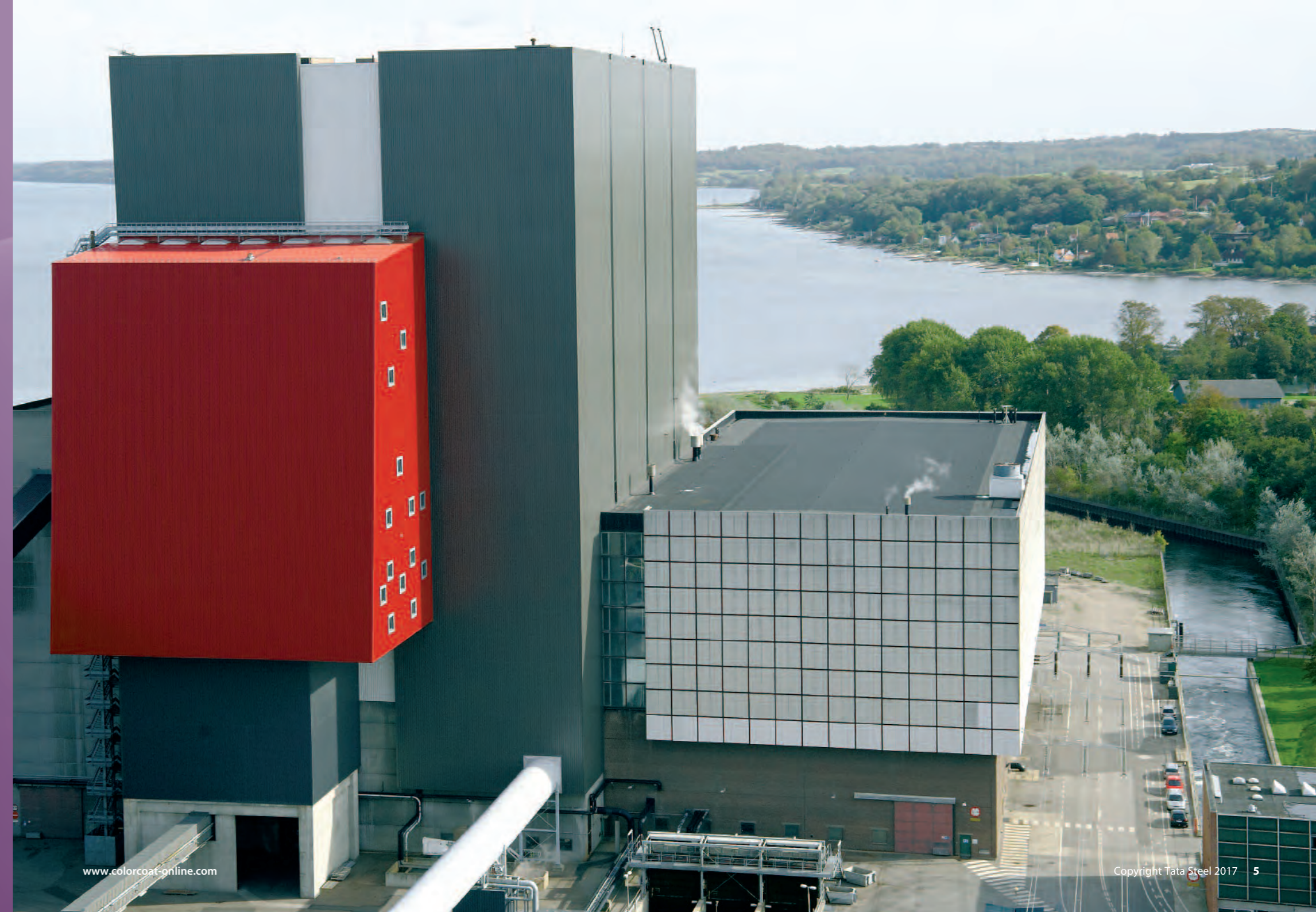
Product features and benefits:

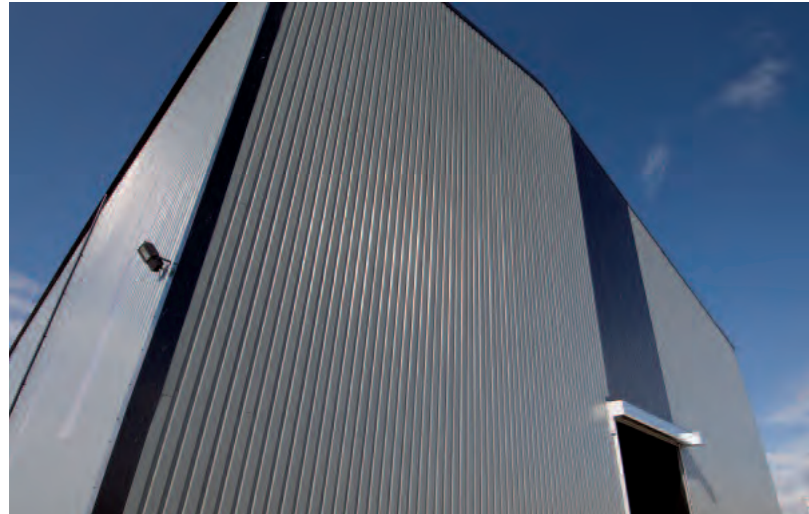
- Optimised Galvalloy® metallic coating for exceptional corrosion resistance and cut edge protection.
- Surpasses requirements of Ruv4 and RC5 as per EN 10169:2015 proving excellent colour and gloss retention and corrosion resistance.
- Exceeds requirements of CPI5 as per EN 10169:2015 demonstrating excellent barrier properties when used internally.
- Made in the UK and certified to BES 6001 Responsible Sourcing standard.
- Scintilla™ embossed as a mark of authenticity from Tata Steel.
- Double-sided option providing a robust barrier on the reverse side of the steel substrate for buildings with demanding internal and external environments.
- Fully recyclable with full product traceability and REACH compliance.

BES 6001

Responsible Sourcing

www.greenbooklive.com





Grain store Liverpool, England

The buildings' exposure to high winds and salt water dictated the need for a product of high quality and performance. Originally constructed in 1960 and located in a very exposed, aggressive, marine location in Liverpool's Huskisson Dock, this grain storage facility had fallen into disrepair.

Colorcoat HPS200 Ultra™ was chosen to provide an effective long term solution for the refurbishment of the building envelope to transform the buildings' appearance and protection from the weather.

PROJECT DETAILS

Client: Mersey Docks & Harbour Company
Contractors: Lester Fabrications & Cladding Co. Ltd. and Houghton & Co. Ltd.
System Manufacturers: Tata Steel and Euroclad
Colorcoat® product: Colorcoat HPS200 Ultra™ by Tata Steel (*Single sided*)
Colour: Goosewing Grey (RAL 7038) and Merlin Grey (RAL 180 40 05)
Year: 2010



Goosewing Grey



Merlin Grey





Nautical centre Scheveningen, The Netherlands

The Scheveningen harbour has gone through a major regeneration with traditional fishing companies making way for hospitality and recreational buildings. Concentrated around the marina the selection of the pre-finished steel was very important due to the highly corrosive coastal environment. Colorcoat HPS200 Ultra™ was specified due to it achieving RC5 corrosion classification in accordance with EN 10169:2015 making it the ideal choice for long lasting building envelopes in coastal areas.

PROJECT DETAILS

Client: Malherbe B.V.

Architect: KOW Architectuur

Main Contractor: Dura Vermeer Leidschendam

Cladding Contractor: Meerman Konstruktie B.V.

System Manufacturer: SAB-profiel bv

Colorcoat® product: Colorcoat HPS200™ by Tata Steel

Colours: Albatross (RAL 240 80 05) and Moorland Green (RAL 100 60 20)

Year: 2006



Albatross



Moorland Green



Super durability



RNLI HQ

Swords, Co. Dublin, Ireland

Located inland within 2km of the Irish coastline, the RNLI Divisional Headquarters in Swords, near Dublin, uses Colorcoat HPS200™ (now superseded by Colorcoat HPS200 Ultra™) in Goosewing Grey for the roof. Colorcoat HPS200 Ultra™ pre-finished steel provides super durability and corrosion resistance, demonstrating proven performance and reliability.

PROJECT DETAILS

Client: RNLI

Architect: Ellis Belk Associates Ltd.

Main Contractor: Buildcon Construction

Cladding Contractor: Colleen Construction

System Manufacturer: Tegral

Colorcoat® product: Colorcoat HPS200™ by Tata Steel (Single sided)

Colour: Goosewing Grey (RAL 7038)

Year: 2005



Goosewing Grey





Pier Weston-Super-Mare, England

Devastated by fire in 2008, the Weston-Super-Mare Grand Pier and Pavilion building were rebuilt and re-opened to the public in 2010. Colorcoat HPS200 Ultra™ was chosen for the external walls of the Pavilion due to its ability to perform in harsh coastal environments, surpassing the requirements of Ruv4 and RC5 as per EN 10169:2015.

PROJECT DETAILS

Client: Grand Pier Ltd.

Architect: Angus Meek Partnership Ltd.

Main Contractor: John Sisk & Son Ltd.

Cladding Contractor: Yorkshire Sheeting

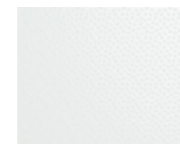
Colorcoat® product: Colorcoat HPS200 Ultra™ by Tata Steel (*Single sided*)

Colours: Merlin Grey (RAL 180 40 05) and White (RAL 9003)

Year: 2010



Merlin Grey



White





Compost plant Valencia, Spain

Los Hornillos is a major waste recycling and reclamation centre in Valencia. The composting plant processes thousands of tonnes of waste organic matter every year. This process results in a corrosive atmosphere that places heavy demands on the fabric of the building. The plant operator chose double sided Colorcoat HPS200 Ultra™ from Tata Steel for this demanding application as it exceeds the requirements of CP15 as per EN 10169:2015 demonstrating excellent barrier properties when used internally

PROJECT DETAILS

Client: EMTRE (Entidad Metropolitana para el Tratamiento de Residuos)

Architect: Estudio AF, Madrid

Main Contractor: Hornillos obra UT

Cladding Contractor: Covaltia

System Manufacturer: Metalperfil

Colorcoat® product: Colorcoat HPS200 Ultra™ by Tata Steel (*Double sided*)

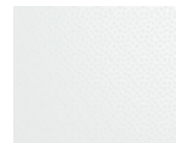
Internal guarantee: 20 years (specific to this project)

Colours: Goosewing Grey (RAL 7038) and White (RAL 9003)

Year: 2011



Goosewing Grey



White





Waste facility Manchester, England

Greater Manchester Waste PFI recycles around 1.3 million tonnes of waste material each year. Double sided Colorcoat HPS200 Ultra™ was specified, providing the extra protection required for the demanding internal environment of the facility.

PROJECT DETAILS

Client: Viridor Laing Waste Management

Architect: Scott Wilson Architects

Main Contractor: Costain

Cladding Contractor: Lakesmere

System Manufacturer: Euroclad

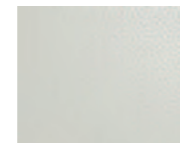
Colorcoat® product: Colorcoat HPS200 Ultra™ by Tata Steel (*Double sided*)

Colours: Goosewing Grey (RAL 7038), Hamlet (RAL 9002) and Heather (RAL 040 70 05)

Year: 2011



Goosewing Grey



Hamlet



Heather





Sludge plant Antwerp, Belgium

In the port of Antwerp, the robust and durable properties of Colorcoat HPS200 Ultra™ are known. There is the large sludge plant Amoras. The interior walls, facade and roof of the building are made of Colorcoat HPS200 Ultra™. The factory dredges sludge from the port and removes pollution, chemicals and moisture, so that the residue in the future can be reused. For example, as raw material for concrete or brick. By these processes the material can be exposed to increased concentrations of chemicals.

PROJECT DETAILS

Client: Jan de Nul N.V.

Main Contractor: Cordeel N.V.

Sub contractor: MSB Gevel- en Dakbekleding

System Manufacturer: N.V. Joris Ide & SAB-profiel bv

Colorcoat® product: Colorcoat HPS200 Ultra™ by Tata Steel (*Single sided*)

Colours: Albatross (RAL 240 80 05) and Merlin Grey (RAL 180 40 05)

Year: 2011



Albatross



Merlin Grey





Images courtesy of Prater Ltd.

Waterworks Peacehaven, England

Peacehaven Wastewater Treatment Works features the UK's largest green roof of its kind, covering an area of almost two and a half football pitches. The green roof has been installed over 18,000m² of RoofDek D100 by Tata Steel in Olive Green double sided Colorcoat HPS200 Ultra™. Due to the demanding internal environment at Peacehaven Wastewater Treatment Works, double sided Colorcoat HPS200 Ultra™ was also used on the walls, to provide a robust barrier on the reverse side of the steel substrate.

PROJECT DETAILS

Client: Southern Water

Architect: Montgomery Watson Harza (MWH)

Main Contractor: 4Delivery Consortium

Cladding Contractor: Prater Ltd.

System Manufacturer: Tata Steel

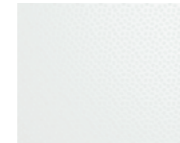
Colorcoat® product: Colorcoat HPS200 Ultra™ by Tata Steel (*Double sided*)

Colours: Olive Green (RAL 100 30 20) and White (RAL 9003)

Year: 2011



Olive Green



White





Sewage plant Warsaw, Poland

Sewage treatment produces an extremely corrosive environment that can quickly cause severe deterioration of internal walls and ceilings. To ensure long-term durability and resistance to corrosion, Czajka needed a proven and high performing pre-finished steel product for the interior of the building. The corrosion resistance of Colorcoat HPS200 Ultra™ has been proven in rigorous independent tests far in excess of the industry norm.

PROJECT DETAILS

Client: Miejskie Przedsiębiorstwo Wodociągów i Kanalizacji
w m. st. Warszawie S.A. (Warsaw Water Company)

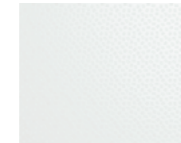
Main Contractor: Warbud S.A.

Profiler: Blachy Pruszyński Sp. z o.o.

Colorcoat® product: Colorcoat HPS200 Ultra™ by Tata Steel (*Double sided*)

Colour: White (RAL 9003)

Year: 2010



White





Bottling plant County Tipperary, Ireland

The Bulmers site in County Tipperary, Ireland, used Colorcoat HPS200™ (now superseded by Colorcoat HPS200 Ultra™) for the roof and walls of the bottling plant and surrounding buildings. Colorcoat HPS200 Ultra™ has been developed to deliver the ultimate in performance in demanding environment both internally and externally, with its impressive sustainability credentials. Long term durability and environmental impacts were the key focus for this project.

PROJECT DETAILS

Client: Bulmers

Architect: John Allen Architects

Main Contractor: Sisk & Mulcahy Construction

Cladding Contractor: Paddy Wall & Sons - Phase 1

Gleeson Roofing N. Ireland - Phase 2

System Manufacturer: Euro Quality Cladding Ltd. (EQC)

Colorcoat® product: Colorcoat HPS200™ by Tata Steel (Single sided)

Colours: Goosewing Grey (RAL 7038), Hamlet (RAL 9002), Meadowland (RAL 100 80 20), Moorland Green (RAL 100 60 20).

Year: 2007



Goosewing Grey



Hamlet



Meadowland



Moorland Green





Distillery Banffshire, Scotland

Double sided Colorcoat HPS200 Ultra™ was used to great effect at the Mulben and Keith Scotch whisky maturation facilities. It was a high priority that the new building envelope should perform to the highest standards for the long term both internally and externally. Colorcoat HPS200 Ultra™ surpasses the requirements of Ruv4 and RC5 as per EN 10169:2015 proving excellent colour retention and corrosion resistance. Colorcoat HPS200 Ultra™ also exceeds requirements of CPI5 as per EN10169:2015 demonstrating excellent barrier properties when used internally, especially in this challenging environment.

PROJECT DETAILS

Client: Chivas Brothers Ltd.

Architect: Blyth and Blyth

Main Contractor: Hathaway Roofing Limited

Cladding Contractor: Robertson Northern

System Manufacturer: Tata Steel

Colorcoat® product: Colorcoat HPS200 Ultra™ by Tata Steel (*Double sided*)

Colours: Hamlet (RAL 9002) and Merlin Grey (RAL 180 40 05)

Year: 2011



Hamlet



Merlin Grey



Super durability



Sulphur project Qatar

The Common Sulphur Project in Qatar is a world class sulphur processing facility located within Ras Laffan Industrial City. Due to the harsh internal and external environment double sided Colorcoat HPS200™ (now superseded by Colorcoat HPS200 Ultra™) was specified for its robustness and resistance to many chemicals and substances.

PROJECT DETAILS

Client: Washington Group International/Al Jabar Consortium (WGI/AJ) via Quantum International Consulting

Operator: Qatargas

System Manufacturer: SAB

Colorcoat® product: Colorcoat HPS200™ by Tata Steel (*Double sided*)

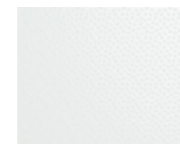
Guarantee: 10 years (specific to this project)

Colour: Albatross (RAL 240 80 05) and White (RAL 9003)

Year: 2010

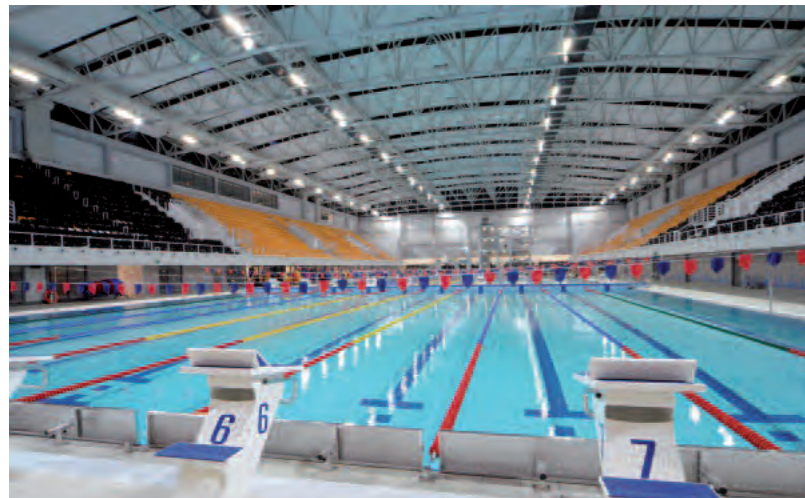


Albatross



White





Aquapark Poznan, Poland

The sports and recreation complex Termy Maltańskie encompasses 1,500m² of recreational swimming pools and has high levels of humidity. The structure of the internal ceiling utilises double sided Colorcoat HPS200 Ultra™ pre-finished steel in White, and classified as a CPI5 product as per EN 10169:2015, the highest classification, ensuring the highest degree of corrosion protection.

PROJECT DETAILS

Client/Building owner: POSiR and Termy Maltańskie Sp. z o.o. on behalf of the City of Poznań

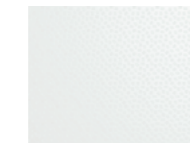
Architect/Contractor: Consortium of Alstal Budownictwo A. Szczupak (leader), Holma Sp. z o.o., Tiwwal Sp. z o.o. oraz Budownictwo Drogowe „Altkom” Sp. z o.o.

System Manufacturer: Blachy Pruszyński Sp z o.o.

Colorcoat® product: Colorcoat HPS200 Ultra™ by Tata Steel (*Double sided*)

Colour: White (RAL 9003)

Year: 2011



White





Aquapark Suwalki, Poland

The Aquapark in Suwałki is one of the most modern water sports and recreation complexes in Poland. Due to the harsh internal environment the pool hall interior is manufactured from double sided Colorcoat HPS200 Ultra™ pre-finished steel, which ensures corrosion protection in the highest degree.

PROJECT DETAILS

Client: Miejska Dyrekcja Inwestycji w Suwałkach/Miasto Suwałki

Building owner: OSiR Suwałki/Miasto Suwałki

Architect: ReStudio Architektury Rafał Jacaszek

System Manufacturer: Budmat

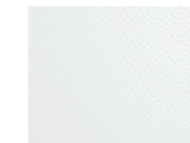
Contractor: UNIBEP S.A.

Colorcoat® product: Colorcoat HPS200 Ultra™ by Tata Steel (*Double sided*)

Internal guarantee: 10 years for the ceiling (specific to this project)

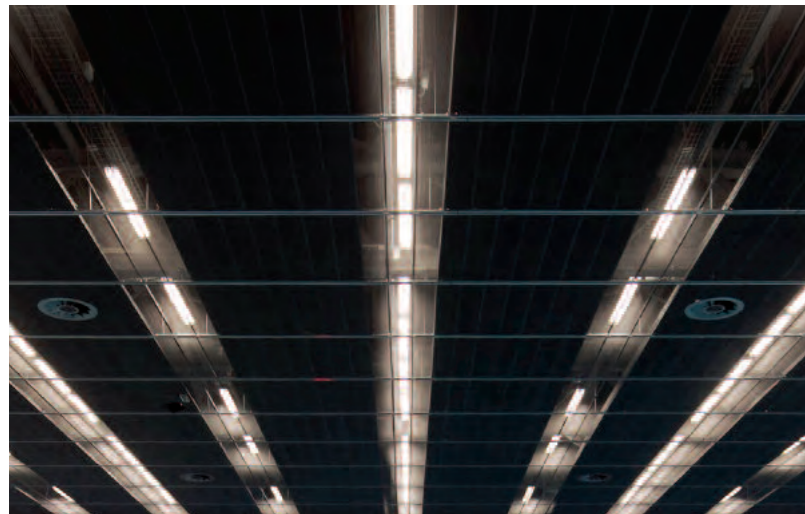
Colour: White (RAL 9003)

Year: 2010



White





Sports centre Amsterdam, The Netherlands

Colorcoat HPS200 Ultra™ is classified as a CPI5 product. This is the highest classified level of corrosion protection for interiors and means that Colorcoat HPS200 Ultra™ is suitable to be used in the most demanding internal environments such as for the ceiling of swimming pools.

PROJECT DETAILS

Client: Ronald McDonalds Centre

Architect: Fact Architects

Main Contractor: Wessels Zeist

System Manufacturer: SAB-profiel bv

Colorcoat® product: Colorcoat HPS200 Ultra™ by Tata Steel (*Single sided*)

Colour: Black (RAL 9005)

Year: 2010



Black





Powerstation Huntstown, Ireland

Colorcoat HPS200™ (now superseded by Colorcoat HPS200 Ultra™) was specified for the Huntstown Power Station. The Power Station provides up to 20% of the Irish National Grid electricity from burning natural gas and through distillate oil, meaning the building envelope needed to be able to withstand the harsh, demanding environment. Colorcoat HPS200 Ultra™ has been subjected to natural and accelerated testing, often way beyond the required standards.

PROJECT DETAILS

Client: Huntstown Power Co. Ltd.

Architect: Mitsubishi/Jacobs Baktie Acting, Manchester

Main Contractor: Mitsubishi Heavy Industry

Cladding Contractor: SIAC Roofing and Cladding, Cork

System Manufacturer: Tegral

Colorcoat® product: Colorcoat HPS200™ by Tata Steel (*Single sided*)

Colour: Albatross (RAL 240 80 05)

Year: 2007



Albatross





Powerstation Denmark

Enstedværket, Denmark is a combined heat and power plant on the Aabenraa Fjord. The salt in the air combines with other particles and heat to produce extremely corrosive environment. Double sided Colorcoat HPS200 Ultra™ was specified for its robust resistance to a wide range of chemicals substances in harsh internal and external environments.

PROJECT DETAILS

Client: Dong Energy A/S

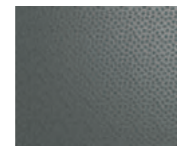
Main Contractor: Persolit A/S Munkebo

System Manufacturer: Tata Steel

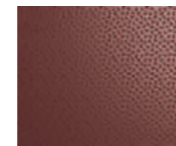
Colorcoat® product: Colorcoat HPS200 Ultra™ by Tata Steel (*Double sided*)

Colours: Ardenne (RAL 7022) and Burano (RAL 3004)

Year: 2011



Ardenne



Burano





Powerhouse St. Kilda, Scotland

Due to the remote location of the Scottish island of St. Kilda the specification of materials for the Powerhouse was a major consideration because of its exposure to the elements. A significant issue was the requirement for a very low maintenance building due to its inaccessibility during severe weather conditions and any repairs or ongoing maintenance would prove costly and difficult.

PROJECT DETAILS

Architect: W A Fairhurst and Partners

Main Contractor: R J McCloud

Cladding Contractor: Isleburn Structural Services

Colorcoat® product: Colorcoat HPS200™ by Tata Steel (*Single sided*)

Colours: Goosewing Grey (RAL 7038), Hamlet (RAL 9002) and

Merlin Grey (RAL 180 40 05)

Year: 2001



Goosewing Grey



Hamlet



Merlin Grey



www.colorcoat-online.com

Trademarks of Tata Steel UK Limited

Colorcoat, Colorcoat Connection, Colorcoat HPS200, Colorcoat HPS200 Ultra, Galvalloy and Scintilla are trademarks of Tata Steel UK Limited.

Care has been taken to ensure that the contents of this publication are accurate, but Tata Steel Europe Limited and its subsidiaries, (including Tata Steel UK Limited), do not accept responsibility or liability for errors or information that is found to be misleading. Suggestions for, or descriptions of, the end use or application of products or methods of working are for information only and Tata Steel Europe Limited and its subsidiaries accept no liability in respect thereof.

Before using products or services supplied or manufactured by Tata Steel Europe Limited and its subsidiaries, customers should satisfy themselves as to their suitability.

Sales Contact Details

Tata Steel

Shotton Works

Deeside

Flintshire CH5 2NH

United Kingdom

T: +44 (0) 1244 812345

Colorcoat Connection™ helpline

T: +44 (0) 1244 892434

F: +44 (0) 1244 892321

E: colorcoat.connection@tatasteel.com

For other countries and languages

Please visit www.colorcoat-online.com