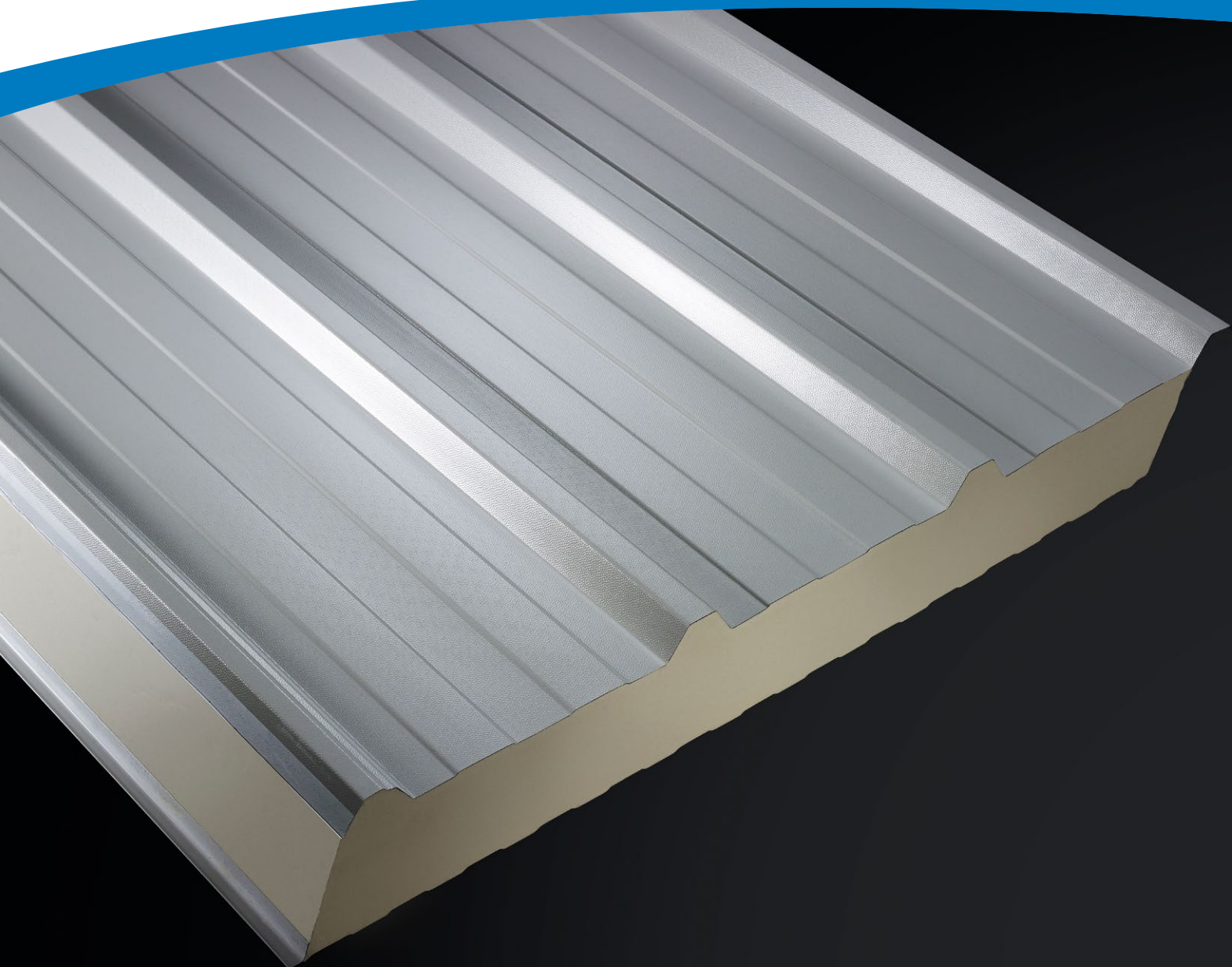


TATA STEEL



The panel range at a glance

Steel faced insulated roof and wall sandwich panels



The panel range at a glance

Steel faced insulated roof and wall sandwich panels

Made in the UK at our Shotton site in North Wales, Tata Steel offers the most extensive and efficient range of fully traceable steel faced PIR insulated panels. Designed and developed to provide high quality building envelope solutions, our panels are suitable for a variety of markets.

Built to last, the single-fix component offers vast design possibilities with smooth-faced and trapezoidal profiled products available in both Colorcoat HPS200 Ultra® and Colorcoat Prisma® pre-finished steel which offer an extensive colour choice.

Our panels are manufactured in factory conditions operating to Quality Management standard BS EN ISO 9001:2015 and Environmental Management standard BS EN ISO 14001:2015 with full traceability of all component materials and certified 'Very Good' to BRE's responsible sourcing standard BES 6001.

Platinum® Plus – a guarantee of enduring performance

The most comprehensive building envelope guarantee available, made unique with our technical support from specification to completion, and beyond – including those all-important final checks during installation.

We provide technical assistance at every stage of the project, with a single point of contact to ensure your specification meets the needs of the building owner.

Platinum® Plus incorporates the highest quality components that provide you with unrivalled choice and flexibility in the specification of your building envelope solution. With coverage for 25 years the guarantee is both direct with Tata Steel and transferrable with ownership of the building.

Technical support freely available

The products are fully tested by third parties for criteria such as thermal, fire safety, air-tightness, and resistance to water penetration. This together with our extensive and unbiased technical support sets us apart. We will recommend the most appropriate system for your project to provide you with a building envelope solution that meets your requirements, performance criteria and is long lasting.

We offer support on:

- Specification writing.
- Detail design.
- Wind and snow load calculations.
- U-value calculation.
- Load span checks.
- Acoustic SRI predictions.
- Building Regulation advice.
- Assistance with SBEM.
- Advice on maximising BREEAM credits.
- Condensation risk analysis.
- Fire performance.

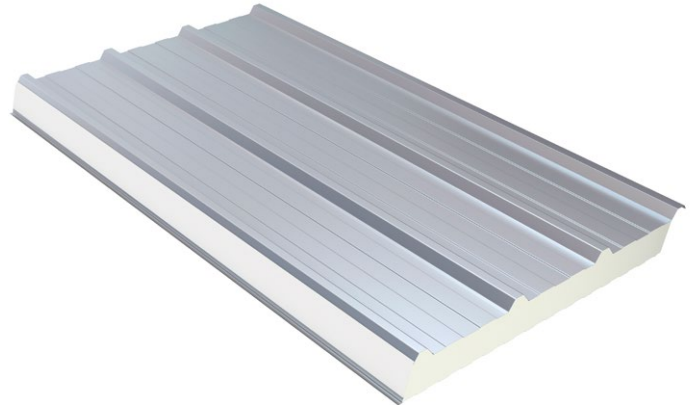
Underpinned by Confidex®

Our portfolio of high quality panels is available as standard with the market leading Colorcoat HPS200 Ultra® and Colorcoat Prisma® pre-finished steel which are covered by the Confidex® Guarantee, offering long-term performance and assurance for up to 40 years.



Trisomet®

Our trapezoidal roof and wall panel is manufactured as a single component allowing fast installation.



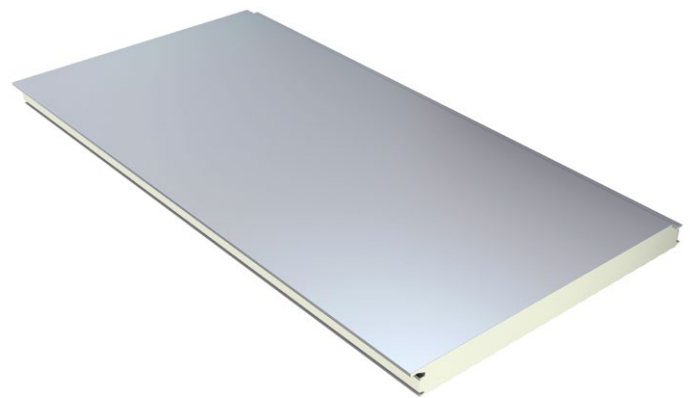
Suitable for roof and wall applications, Trisomet® benefits include:

- Core depths from 40mm to 135mm providing U-values down to 0.15W/m²K.
- Approved to FM Class 4880, 4881 and 4471 to an unlimited wall height.
- LPCB (Loss Prevention Certification Board) approval to LPS 1181 Part 1.

- Fire resistance performance of up to 30 minutes insulation and 4 hours integrity achievable with standard fixing and sealing methods.
- When used in conjunction with Colorcoat HPS200 Ultra®, PV modules can be installed at any point throughout the Confidex® duration and will be covered for the remainder of the guarantee period. Future proofing your building so that it is PV ready.
- Technical data and drawings available in BIM ready format.

Formawall®

A smooth-faced, flat, secret fix, insulated panel that provides a high-end architectural appearance.



Formawall® is available in Colorcoat Prisma® pre-finished steel in a range of colours. Suitable for high-end aesthetically pleasing wall applications, Formawall® offers the following benefits:

- Core depths from 70mm to 120mm providing U-values down to 0.17W/m²K.
- Approved to FM Class 4880 and 4881 to an unlimited wall height.

- LPCB (Loss Prevention Certification Board) approval to LPS 1181 Part 1 helps reduce insurance premiums and assures reaction to fire performance.
- Fire resistance performance of 15 minutes insulation and 4 hours integrity achievable with enhanced fixing methods (horizontally or vertically laid).
- Technical data and drawings available in BIM ready format.



Trimapanel®

Our insulated architectural wall panels provide the ability to create a simplistic design with a one piece component.

The Trimapanel® family includes a range of steel faced insulated architectural wall panels, from micro-rib to smooth finishes, providing attractive external aesthetics.

Suitable for wall applications, Trimapanel® benefits include:

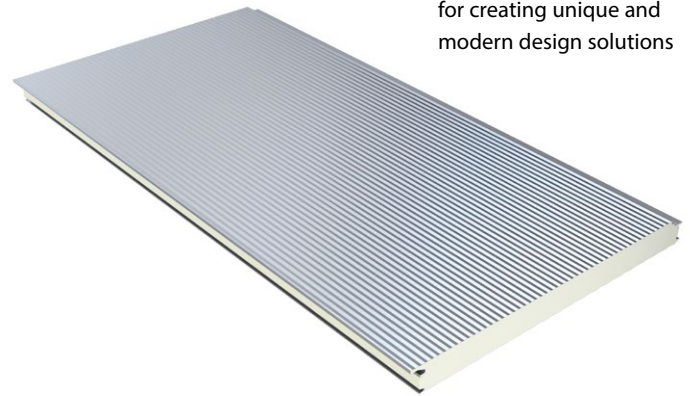
- Core depths from 70mm to 120mm providing U-values down to 0.17W/m²K.
- Flexible design allows vertical and horizontal panel installation.

- Secret-fix joint design allows primary fixings to be hidden from view, providing an uninterrupted external surface.
- Available with a wide range of flashing options, ancillaries and fabricated corner and curved panel options.
- Approved to FM Class 4880 and 4881 to an unlimited wall height.
- LPCB (Loss Prevention Certification Board) approval to LPS 1181 Part 1.
- Fire resistance performance of 15 mins insulation and 4 hours integrity achievable with enhanced fixing methods.
- Technical data and drawings available in BIM ready format.



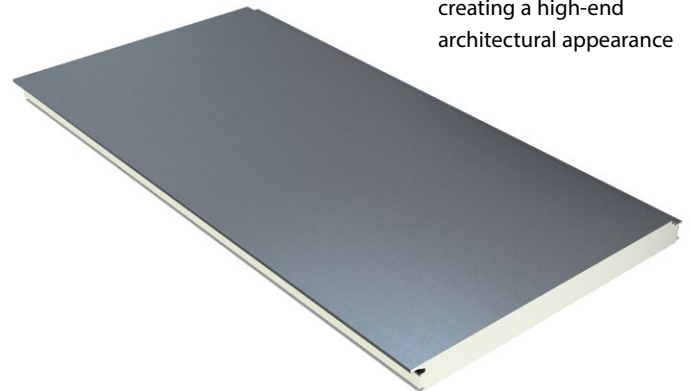
Trimapanel® micro-rib

Architectural wall panel for creating unique and modern design solutions



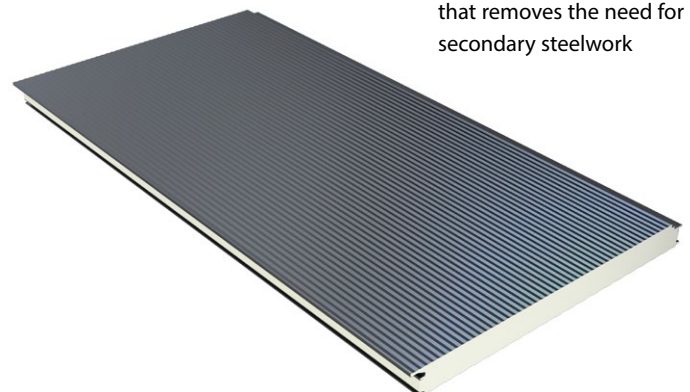
Trimapanel® flat

Smooth finish panel for creating a high-end architectural appearance



Trimapanel® FTF (frame to frame)

Enhanced long-span panel that removes the need for secondary steelwork



Our sustainable approach

Our wide range of steel faced insulated roof and wall panels is the most durable on the market, having achieved the highest sustainability standards including accreditation to BES 6001, the Responsible Sourcing Standard for construction products.



EPDs

As the first manufacturer to become an approved Environmental Product Declaration (EPD) programme operator, Tata Steel now has the ability to create product specific EPDs for our systems that comply with EN 15804 and ISO 14025 standards.

Being able to supply product specific Type III externally verified EPDs, along with BES 6001 responsible sourcing certification, assists our construction supply chains to accrue points under building certification schemes, such as LEED and BREEAM, on their projects.

In addition, the level of transparency and reporting afforded by our operatorship of an EPD programme, helps optimum resource decisions to be made and demonstrates the sustainability of steel and our steel building products.

BIM: the way you want it

The DNA profiler is the first product data tool of its kind that will allow you to access Tata Steel's product data using a large range of BIM software formats. You can now search for any of our construction products, including Trisomet®, Trimapanel® micro-rib, Trimapanel® flat, Trimapanel® FTF and Formawall®.

Each of the DNA Profiler's data-rich BIM objects feature contact details, mechanical properties, performance characteristics, maintenance requirements and guarantee periods. This powerful resource is free for download and can be found at www.tatasteelDNAprofiler.com

Reaction and resistance to fire

All our steel faced insulated roof and wall panels are supplied in accordance with the Building Regulations. Our panels are fully tested and classified for reaction and resistance to fire with insurance approval to the Loss Prevention Certification Board (LPCB) LPS 1181-1 and FM Global.

For more information on our products please contact:

T: +44 (0) 1244 892199

E: technical.envelopeproducts@tatasteeleurope.com

www.tatasteeleurope.com

Trademarks of Tata Steel UK Limited

Colorcoat Prisma, Colorcoat HPS200 Ultra, Confidex, Formawall, Platinum, Trimapanel and Trisomet are trademarks of Tata Steel UK Limited.

While care has been taken to ensure that the information contained in this publication is accurate, neither Tata Steel, nor its subsidiaries, accept responsibility or liability for errors or for information which is found to be misleading.

Before using products or services supplied or manufactured by Tata Steel and its subsidiaries, customers should satisfy themselves as to their suitability.



Scan for the latest version of this literature

Copyright 2021

Tata Steel UK Limited

Tata Steel

Shotton

Deeside

Flintshire

CH5 2NH

United Kingdom

T: +44 (0) 1244 892199

E: technical.envelopeproducts@tatasteeleurope.com

Tata Steel, Registered Office: 18 Grosvenor Place, London, SW1X 7HS.
Registered in England No. 2280000

UK1221