

TATA STEEL



Case study

Nordic Haven, Bydgoszcz, Poland

Cladding system manufacturer:

Blachy Pruszyński

Architect: Nizio Design

Main contractor: IDS-BUD

Cladding installer:

Artrys Projekt

Tata Steel products:

Colorcoat Prisma® in Ardenne

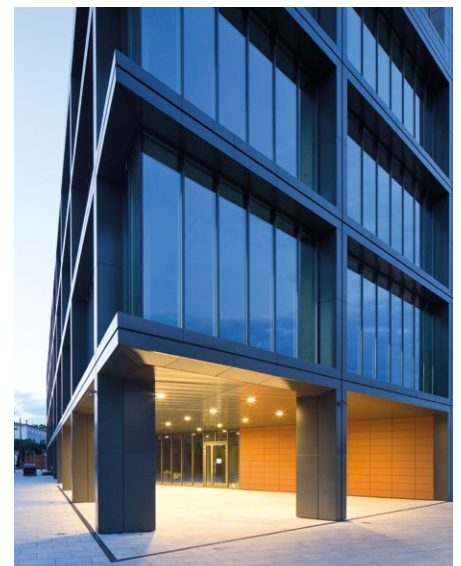
Year: 2016

Overlooking the River Brda in the Polish city of Bydgoszcz, Nordic Haven is a stunning 16-storey mixed-use structure, containing both office and residential elements.

The building has cascading terraces that climb upwards, offering most floors uninterrupted views over the adjacent Brda River.

On one side of the development, the building tops out at only four-storeys, in order to match an existing neighbouring structure. On the other elevations, Nordic Haven climbs up in terraces to its maximum 16-storeys height.

The apartment residents enjoy raised courtyards with greenery and viewing platforms, as well as green terraces on the roofs.







Colorcoat Prisma® pre-finished steel from Tata Steel has allowed the developers of this unique building to create a modern and stand-out landmark complex.

The challenge

It was important to fulfil the client's wishes for a building envelope that would protect the structure by meeting stringent fire regulations, look aesthetically-pleasing and achieve a short construction programme.

Supply chain partner of Tata Steel, Blachy Pruszyński based in Poland, helped design the building's façade, and knew how important it was for the cladding system to fit around and complement the structure's extensive glazing.

Blachy Pruszyński showed the architects, Nizio Design, a number of solutions. The final rainscreen system selected was chosen because it met the fire performance requirements needed for a high-rise residential development.

As well as meeting the fire requirements, the architects also wanted a system which could be supplied in a particular colour, which was a hue that was not readily available. This is where Tata Steel came to the rescue.





The solution

Tata Steel's ethos is to provide customers with market leading products and services that surpass all other alternative solutions.

"Our long-standing collaboration with Tata Steel has not been limited to a mere order-delivery relationship. More often than not, our close working relationship has been focused on solving problems and finding suitable solutions for a designer. This was the case when we were approached by the architects Nizio Design, who invited us to collaborate on the Nordic Haven development," says Eliza Gissel of Blachy Pruszyński.

"Tata Steel basically came to the rescue by offering Colorcoat Prisma® along with all the required fire performance certification."

As none of the standard colours in the range met the architect's requirements, Tata Steel used their Repertoire® colour matching service to create samples for consideration. One of them, Ardenne, was a perfect match and was instantly approved by Nizio Design.

Not only did Colorcoat Prisma® meet the bespoke colour requirements, but it also had the highest rating in reaction to fire certification for a pre-finished steel sheet product and provided a suitable alternative to the existing specification.

For the Nordic Haven project, the Tata Steel product was installed as a single-sided rainscreen, positioned on specially-designed frames.

The current generation of Colorcoat Prisma®, launched in 2017, is a cutting edge three-layer robust, chrome free pre-finished steel product. It is available in a greatly enhanced range of colours and effects with exceptional UV performance, due to an additional clear layer.

The product not only pushes the boundaries for UV performance, it also outperforms the highest European corrosion resistance standards. This makes it the ideal choice for a variety of building types around the world.

For more information on Colorcoat® products and services please contact the Colorcoat Connection® helpline on: Tel: +44 (0) 1244 892434 or email: colorcoat.connection@tatasteeleurope.com

www.colorcoat-online.com

Colorcoat Prisma and Repertoire are registered trademarks of Tata Steel UK Limited.

While care has been taken to ensure that the information contained in this publication is accurate, neither Tata Steel, nor its subsidiaries, accept responsibility or liability for errors or for information which is found to be misleading. Before using products or services supplied or manufactured by Tata Steel and its subsidiaries, customers should satisfy themselves as to their suitability.

Copyright 2021 Tata Steel UK Limited is registered in England under number 2280000 with registered office at 18 Grosvenor Place, London, SW1X 7HS.

Language English 0721

Tata Steel

Shotton Works, Deeside, Flintshire,
CH5 2NH, United Kingdom

Colorcoat Connection® helpline

T: +44 (0) 1244 892434

E: colorcoat.connection@tatasteeleurope.com