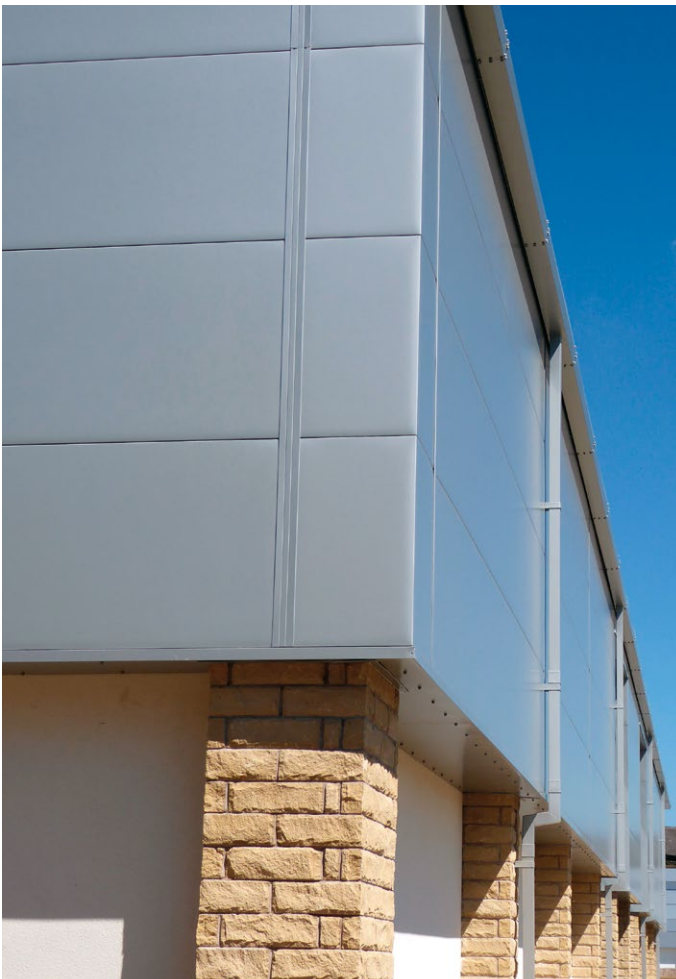
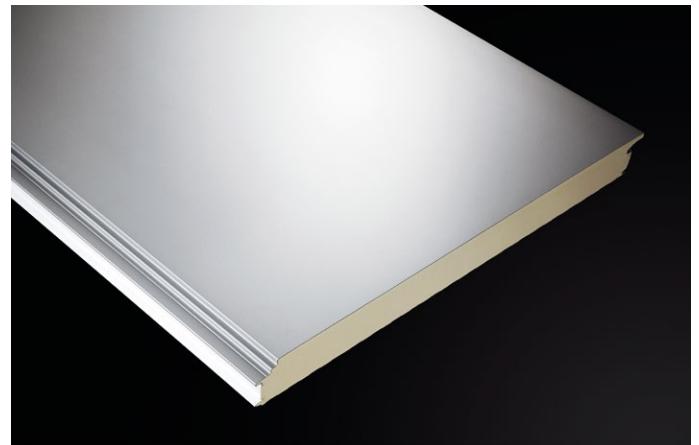


Formawall® External wall panel

BES 6001 certified as responsibly sourced, Formawall® is an insulated, flat, smooth faced, composite wall panel. The secret-fix joint detail design allows for fast construction and provides a high-end architectural appearance similar to a rainscreen façade.

Opening up the design possibilities, the panel can be laid horizontally or vertically and is supplied as standard with Colorcoat Prisma® external finish in a wide range of standard colours including metallics.



Technical Services

Our dedicated building envelope technical team are available to support you by providing advice on the best product for your project. They are on hand to help you with:

- Detail design.
- BIM
- Wind load calculations.
- U-value calculations.
- Load span checks.
- Acoustic SRI predictions.
- Specification writing.
- Advice on meeting Building Regulations.
- Maximising BREEAM credits.
- Assistance with SBEM.
- Condensation risk analysis.

Basic technical data

Thickness (mm)	70, 90 and 120
Maximum length (mm)	12,000
Minimum length (mm)	
On-line*	2,400
Off-line	300
Weight based on thickness in mm (kg/m²)	
70	11.89
90	12.67
120	13.85

* Panels ordered below the minimum on-line length will require off-line cutting and will be subject to a surcharge.

Span/load indicator

Positive loading

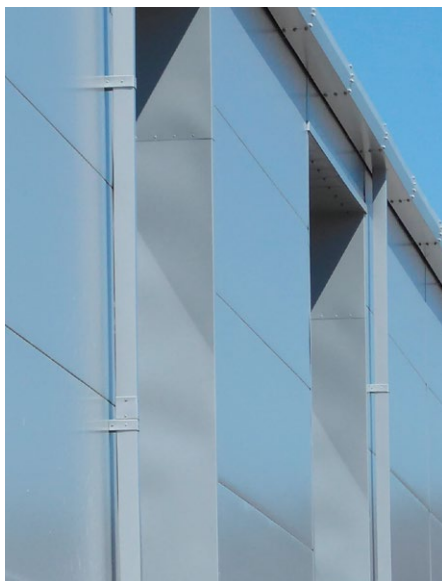
Safe spans in metres (based on two fasteners per support – and supports being 2mm steel)

Panel thickness	Single span load (kN/m ²)			Double span load (kN/m ²)			Triple span load (kN/m ²)		
	0.75	1.00	1.25	0.75	1.00	1.25	0.75	1.00	1.25
70mm	4.55	4.00	3.60	4.85	4.30	3.95	5.35	4.70	4.20
90mm	5.45	4.80	4.35	5.50	4.90	4.45	6.00	5.30	4.80
120mm	6.70	5.95	5.35	6.40	5.65	5.15	7.00	6.15	5.55

Negative loading

Safe spans in metres (based on two fasteners per support – and supports being 2mm steel)

Panel thickness	Single span load (kN/m ²)			Double span load (kN/m ²)			Triple span load (kN/m ²)		
	0.75	1.00	1.25	0.75	1.00	1.25	0.75	1.00	1.25
70mm	-4.35	-3.80	-3.40	-4.40	-3.80	-3.35	-4.40	-3.80	-3.35
90mm	-5.00	-4.35	-3.85	-5.00	-4.20	-3.35	-5.00	-4.20	-3.35
120mm	-5.80	-5.00	-4.45	-5.65	-4.20	-3.35	-5.65	-4.20	-3.35



Key benefits:

- U-values down to 0.17W/m²K.
- Third party validation of high standards of quality, thermal performance, fire safety, acoustic performance, air-tightness, water penetration and environmental credentials.
- LPCB (Loss Prevention Certification Board) approval to LPS 1181 Part 1 helps reduce insurance premiums and assures reaction to fire performance.
- FM approved to Class 4880 and 4881 to an unlimited wall height.
- Available with Platinum[®] Plus system guarantee covering an approved range of high-end components.
- Manufactured using Colorcoat Prisma[®] pre-finished steel which includes a Confidex[®] Guarantee of up to 30 years.
- Fire resistance performance of 15 minutes insulation and 4 hours integrity achievable with enhanced fixing methods (horizontally or vertically laid).
- Lower air permeability of the system reduces energy costs, carbon emission rates and facilitates compliance with Building Regulations (Part L2 & TH 6).
- Secret-fix joint design allows primary fixings to be hidden from view.
- Flexible design allows vertical and horizontal panel installation.
- Wide range of flashing, ancillaries, integrated window, integrated louvre, fabricated corner and curved panel options.
- Manufactured in factory conditions operating to quality management standard BS EN ISO 9001:2008 and environmental management standard BS EN ISO 14001:2004.
- Product specification and performance in accordance with BS EN 14509, European Product Standard for CE Marking.
- Full traceability of all component materials and certified 'very good' to BRE's responsible sourcing standard BES 6001.
- Certification to BES 6001 provides independent evidence of our corporate responsibility, and helps increase credits under the Responsible Sourcing of Materials section of BREEAM.



www.tatasteelconstruction.com

Tata Steel

Shotton Works, Deeside
Flintshire, CH5 2NH

T: +44 (0) 1244 892199
E: technical.theworks@tatasteel.com

Language English UK 0417

Trademarks of Tata Steel UK Limited:

Colorcoat Prisma, Confidex, Platinum and Formawall are registered trademarks of Tata Steel UK Limited.

While care has been taken to ensure that the information contained in this publication is accurate, neither Tata Steel Europe Limited, nor its subsidiaries accept responsibility or liability for errors or for information which is found to be misleading.

Copyright 2017 Tata Steel UK Limited.
Registered Office: 30 Millbank London SW1P 4WY
Registered in England No. 2280000