

TATA STEEL

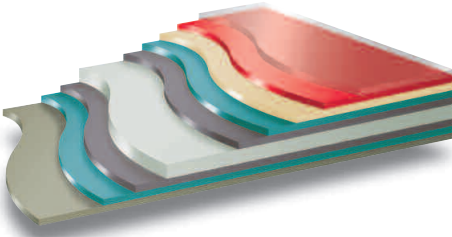


Colorcoat Prisma™
Aesthetics that last.
Guaranteed.

Performance

Colorcoat Prisma™ uses the unique and proven Galvalloy® metallic coating by Tata Steel. Galvalloy® is made with a special mix of 95% Zinc (Zn) and 5% Aluminium (Al) that conforms to EN 10346:2015. The carefully developed proportions of Zinc and Aluminium in Galvalloy® offers a combination of increased barrier and sacrificial protection when compared with conventional Hot Dip Galv (HDG) coatings and provides unrivalled corrosion protection, even at the cut edges.

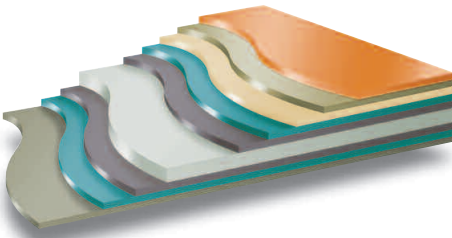
Colorcoat Prisma™ Solid, Metallic & Matts



Key

15µm additional protective clear layer	Base steel substrate
25µm coloured layer with polyamide beads	Galvalloy® metallic coating
25µm corrosion resistant primer	Pre-treatment
Pre-treatment	High performance backing coat
Galvalloy® metallic coating	

Colorcoat Prisma™ Elements



Key

10µm additional protective clear or coloured layer	Base steel substrate
20µm coloured or base polymer layer	Galvalloy® metallic coating
10µm corrosion resistant primer	Pre-treatment
Pre-treatment	High performance backing coat
Galvalloy® metallic coating	

For details and properties of Colorcoat Prisma™ in a Textured finish please see dedicated literature.

Typical properties

Colorcoat Prisma™			Test Standard	
Nominal organic coating thickness	Solids, Metallics, Matts	(µm)*	65	EN 13523-1
	Elements	(µm)*	40	EN 13523-1
Specular gloss (60°):	Solids, Metallics	(%)	25-35	EN 13523-2
	Matts	(%)	<10	EN 13523-2
	Elements	(%)	30-40	EN 13523-2
Scratch resistance:	Solids, Metallics, Matts	(g)	>3000	EN 13523-12
	Elements	(g)	>2500	EN 13523-12
Abrasion resistance: (Taber, 250 rev, 2kg, CS10)	Solids, Metallics, Matts	(mg)	<15	EN 13523-16
	Elements	(mg)	<15	EN 13523-16
Flexibility:	Minimum bend radius	(T)	0.5T@16°C	EN 13523-7
	Reverse impact	(J)	≥18	EN 13523-5
	Adhesion (cross hatch)	(%)	100	EN 13523-6
	Pencil hardness		H	EN 13523-4
Maximum continuous operating temperature	(°C)	90		
Corrosion resistance:	Salt spray	(h)	1000	EN 13523-8
	Humidity	(h)	5000	EN 13523-25
Corrosion resistance category		RC5+	EN 10169:2022	
UV category		Ruv5	EN 10169:2022	
Internal environment classification		CPI5	EN 10169:2022	

*µm = micron

Notes

- The figures contained in this table are typical properties and do not constitute a specification. Tested in accordance with EN 13523. For details on test methods visit www.colorcoat-online.com
- For health and safety datasheets contact Tata Steel.

Fire performance

Reaction to fire performance

Colorcoat Prisma™ including Colorcoat Prisma™ Element colours have been tested to EN 13823 and EN ISO 1716 and can be classified in accordance with EN 13501-1 as A1. This classification is valid for all gauges ≥ 0.4mm for all colours in the product range for single sided product.

Performance of roof coverings

Colorcoat Prisma™ including Colorcoat Prisma™ Element colours are deemed to satisfy, without the need for further testing, the requirements for external fire performance of roof covering products in accordance with Commission Decision 2000/553/EC. This is valid for all gauges ≥ 0.4mm and for all colours in the product range for single and double sided products.

Product warranty

Tata Steel can provide a warranty on a project by project basis for standard roof and wall cladding applications upon completion of a statement of performance application form. The factors which influence the warranty period are geographic location, colour choice, the building environment and use and whether the application is roof or wall.

Please contact Tata Steel for more information about specific warranty periods and conditions before selecting colours for your location.



Independent certification

British Board of Agrément Certificate

The long-term performance of Colorcoat Prisma™ has been recognised within the BBA certificate 91/2717 and relates to the product use as external roofing and cladding or internal lining. "Colorcoat Prisma™ coating and metal treatment will protect the steel substrate against corrosion for a period in excess of 40 years in normal industrial, urban and rural environments in the UK."

Testing according to Russian GOST standards

Colorcoat Prisma™ has been tested by MISIS in Russia which concluded that when used in difficult climatic conditions (e.g. coastal areas) of medium aggressive environments, it should have its functional and aesthetic properties unchanged in Southern and Northern Russian regions with temperatures ranging from +60 to -60 degrees C.

U-mark certification

Colorcoat Prisma™ is being tested by the Karlsruher Institut für Technologie according to DIN 55928-8 and DIN 55634.

ASTM

Colorcoat Prisma™ has also been tested according to a variety of key ASTM test standards for corrosion and UV resistance. For markets that require ASTM test results please contact us.

Sustainability and services

Sustainability

At Tata Steel we are committed to making the products society needs and to making them in the most responsible way. Our commitment to sustainability also means we actively manage our impacts and contribution throughout the full life of our products – with our suppliers, within our own operations, through the supply chains we serve and by taking responsibility for recycling steel. Our manufacturing site has an environmental management system which has been certified to ISO 14001, as well as ISO 50001 Energy Management.

BES 6001 Responsible Sourcing

At Tata Steel we are committed to making the products society needs and to making them in the most responsible way. Our commitment to sustainability also means we actively manage our impacts and contribution throughout the full life of our products - with our suppliers, within our own operations, through the supply chains we serve and by taking responsibility for recycling steel. Colorcoat Prisma™ is certified to the Building Research Establishment's standard for responsible sourcing of materials BES 6001. This reinforces our commitment to sustainability.

Environmental Product Declaration (EPD)

Tata Steel have published an Environmental Product Declaration (EPD) for Colorcoat Prisma™ that complies with EN 15804 and ISO 14025. Please visit www.colorcoat-online.com/epd for further details.

REACH

Colorcoat Prisma™ is produced with both the surface treatment and primer free of chromates including hexavalent chromate (substances included in the Annex XIV list of REACH) and is fully compliant with the current REACH legislation. To assist customers, updates of REACH obligations as well as product health and safety datasheets are available.



Photographer: Harry Noback



Colorcoat® services

The Colorcoat® brand is recognised as the exclusive mark of quality and metal envelope expertise and is supported by a comprehensive range of services, technical advice and guidance.

Colorcoat® technical support team

Our dedicated team are available to assist you with queries relating to a range of metal building envelope systems to ensure you get the right solution for your building. Visit www.colorcoat-online.com to find out who the representative is for your region.

Metal hand samples

Metal hand samples are available for all colours. For a truer representation of colour and effect, please obtain metal hand samples online at www.colorcoat-online.com/samples



Colour support

Colour consistency

If tonal consistency is critical, all cladding for a single elevation should come from the same production batch. All metallic shades and Element colours exhibit a degree of directionality.

Matching components

If accessories made from other materials are to be colour-matched to the roof or wall cladding, the best reference is the actual profiles or panels delivered to site, or material from the same batch.

Repertoire®

As an additional service, whether you want your building to stand out, or blend with the surroundings, we can create a unique identity for your building. Through our Repertoire® colour consultancy service we can match almost any solid colour for walls or roofs of your building, with a minimum order quantity of 5,000m², we can work from either physical swatches or reference standards. Any approved Repertoire® solid colour will be subject to the statement of performance process on a case by case basis.



Colour availability

Colour reference table

Colour	BS	RAL	SRI	SSST
Pegasus	*	*	28	72
Aquarius	*	*	50	64
Atlantis	*	*	10	78
Helios	*	*	19	75
Kronos	*	*	2	82
Sirius	*	9006	50	63
Orion	*	9007	24	73
Zeus	*	*	19	75
Ephyra	*	*	38	68
Ariana	*	*	17	76
Hamlet	*	9002	73	55
Cream	*	1015	77	53
Oxide Red†	*	3009	20	75
Sargasso	*	5003	5	81
Black	00E53	9005	0	82
White	00E55	9010	95	46
Oyster	*	7035	61	60
Alaska Grey	*	7000	21	74
Slate Grey	*	7012	11	78
Anthracite	*	7016	5	81
Seren White	*	*	90	48
Seren Silver	*	*	49	64
Seren Gold	*	*	51	63
Seren Copper	*	*	41	67
Seren Black	*	*	0	83
White Matt	*	9010	91	48
Sirius Matt	*	9006	52	63
Orion Matt	*	9007	20	75
Zeus Matt	*	*	20	74

RAL references

4 digit numbers are RAL Classic references.

British Standard or RAL reference numbers shown in the table, represent the nearest colours and are not exact matches to Colorcoat Prisma™.

* These colours do not have equivalent BS/RAL references.

† Price extra applies.

SRI – Solar Reflective Index as per ASTM E 1980.

SSST – Steady State Surface Temperature as per ASTM E 1980.

Solar Reflective Index (SRI) and Steady State Surface Temperature (SSST)

The Solar Reflectance Index and Steady State Surface Temperature has been determined for all 29 standard colours according to ASTM E 1980 using the medium wind speed coefficient and values for reflectance and emissivity. Solar reflectivity or reflectance is the ability of a material to reflect solar energy from its surface back into the atmosphere, where the higher the SRI value the greater the ability of the Colorcoat Prisma™ colour to reflect the solar radiation.

Depending on the pigment selection, the colours have a different SSST value with white colours having the lowest value, black the highest value and the other colours somewhere in between these extremities.

Thermal Emissivity (to ASTM E 1980) and Light Reflectance Values (LRV) (to BS 8493:2008+A1:2010) are also available for the standard colours. Please contact the Colorcoat Connection™ helpline for these.



Image courtesy of Atlas Weathering Services Group – South Florida laboratory.

For further details visit:
www.colorcoat-online.com

Colorcoat Prisma™

Introduction

Colorcoat Prisma™ demonstrates a step change by utilising cutting edge three layer manufacturing technology to create an optimised, robust, chrome free pre-finished steel product.

This development in manufacturing and extensive testing, allows us to offer Colorcoat Prisma™ in a greatly enhanced range of colours and effects.

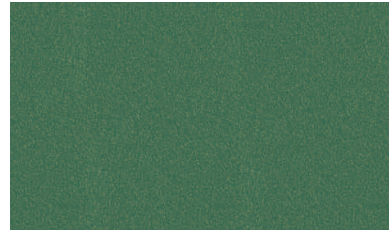
The contemporary colour range includes the Elements selection of natural metal colours as well as a wide selection of inspired Matt shades such as Matt Metallics ideal for facade applications.

Colorcoat Prisma™ not only uniquely pushes the boundaries for UV performance but also outperforms the highest European corrosion resistance standards. This makes it the ideal choice for commercial, retail, warehouse, public sector and superior aesthetic buildings that are truly built to last.

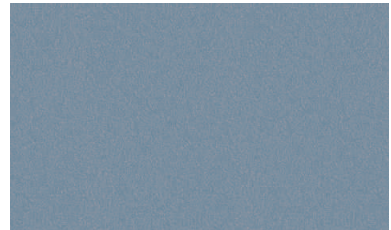
Product benefits

- 3 layer coating technology, providing enhanced aesthetics, long term performance and durability.
- Solid, Metallic, Matt and Element colours meet Ruv5 and RC5+ as per EN 10169:2022 proving excellent colour and gloss retention and corrosion resistance.
- Optimised Galvalloy® metallic coating for ultimate corrosion resistance and cut edge protection.
- Independently tested for liberation of volatile organic compounds (VOC) against EN ISO 16000-9 and achieved an A+ rating.
- Fully REACH compliant & free of chromates including hexavalent chrome.
- Made in the UK. Certified to BES 6001 Responsible Sourcing Standard.
- Fully supports BREEAM & LEED certification.
- Robust and durable topcoat for easier handling and processing.
- Reverse side branding making traceability easy.

Special metallics



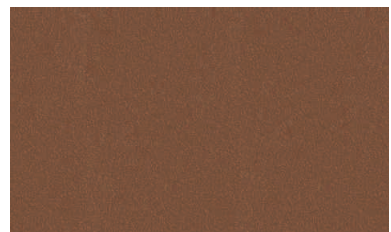
Pegasus



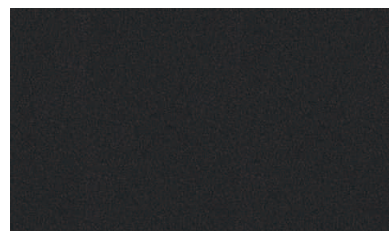
Aquarius



Atlantis

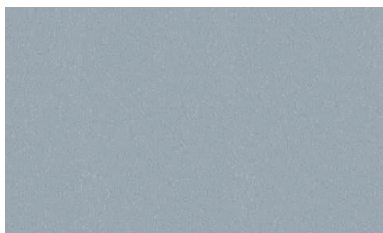


Helios

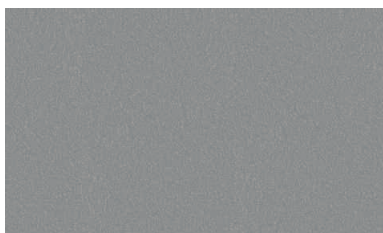


Kronos

Special metallics



Sirius (RAL 9006)



Orion (RAL 9007)



Zeus

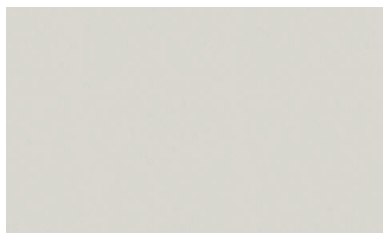


Ephyra

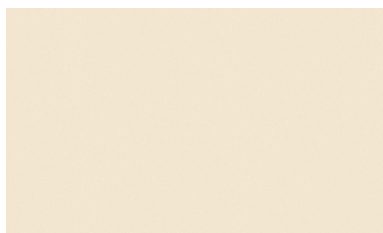


Ariana

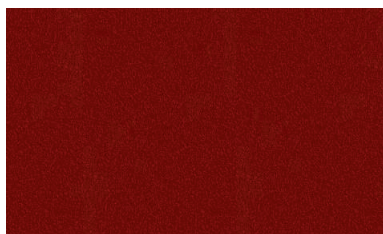
Solid colours



Hamlet (RAL 9002)



Cream (RAL 1015)



Oxide Red† (RAL 3009)

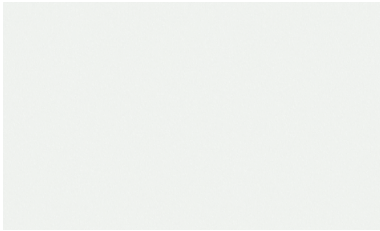


Sargasso (RAL 5003)



Black (RAL 9005)

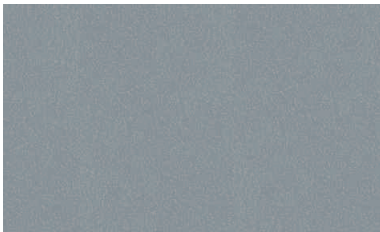
Solid colours



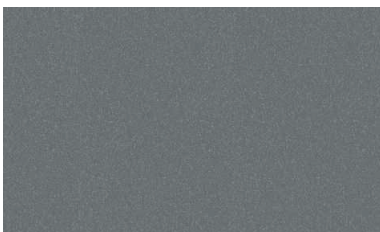
White (RAL 9010)



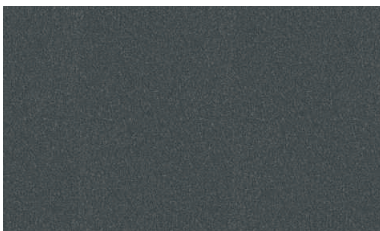
Oyster (RAL 7035)



Alaska Grey (RAL 7000)

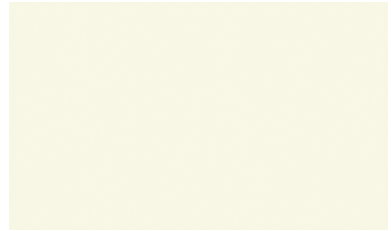


Slate Grey (RAL 7012)



Anthracite (RAL 7016)

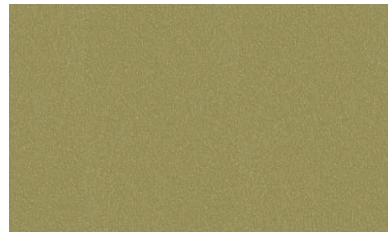
Elements



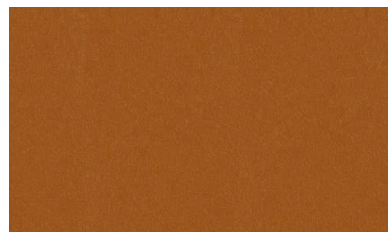
Seren White



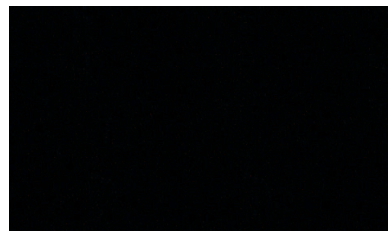
Seren Silver



Seren Gold

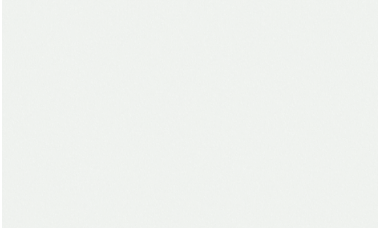


Seren Copper

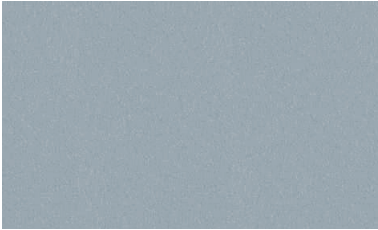


Seren Black

Matt colours



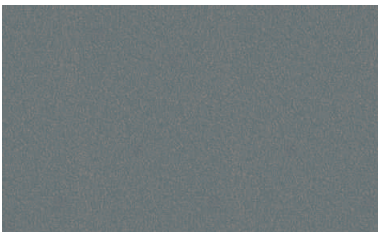
White Matt (RAL 9010)



Sirius Matt (RAL 9006)



Orion Matt (RAL 9007)



Zeus Matt

Product options

Specification

To secure the peace of mind that comes from a rigorously manufactured and world wide tested product from Tata Steel, please ensure Colorcoat® as well as the individual product name is specified: Colorcoat Prisma™ by Tata Steel with Galvalloy® metallic coating.

Double sided option

Colorcoat Prisma™ is provided with a high performance backing coat as standard, but is also available in double sided in a limited range of colours for the reverse side.

For more information please contact the Colorcoat Connection™ helpline on +44 (0) 1244 892434.



For further details visit:
www.colorcoat-online.com

www.colorcoat-online.com

Trademarks of Tata Steel

Aquarius, Atlantis, Colorcoat, Colorcoat Connection, Colorcoat Prisma, Galvalloy, Hamlet, Helios, Kronos, Orion, Pegasus, Repertoire, Seren, Sirius and Zeus are trademarks of Tata Steel.

Whilst the Colorcoat Connection® helpline takes care in giving out information or advice, it does so only on the basis of the facts supplied. Tata Steel Europe Limited and its subsidiaries do not accept any liability for providing inaccurate, misleading or incomplete information or advice or any reliance which may be placed on such information or advice. The recipient should satisfy itself of the accuracy and appropriateness of any information or advice before relying on it.

While care has been taken to ensure that the information contained in this publication is accurate, neither Tata Steel, nor its subsidiaries, accept responsibility or liability for errors or for information which is found to be misleading. Suggestions for, or descriptions of, the end use or application of products or methods of working are for information only and Tata Steel Europe Limited and its subsidiaries accept no liability in respect thereof.

Before using products or services supplied or manufactured by Tata Steel and its subsidiaries, customers should satisfy themselves as to their suitability.



Scan for the latest version of this literature.

Sales Contact Details

Tata Steel

Shotton Works, Deeside
Flintshire CH5 2NH
United Kingdom
T: +44 (0) 1244 812345

Colorcoat Connection™ helpline

T: +44 (0) 1244 892434
E: colorcoat.connection@tatasteel.com

Copyright 2022 Tata Steel UK Limited.
Registered Office: 18 Grosvenor Place, London, SW1X 7HS.
Registered in England No. 2280000

Language English ROW 1122