

Colorcoat Aquatite® Welding recommendations

The integrity and long-term performance of Colorcoat Aquatite® can be affected significantly by the way that it is welded. Here practical advice and guidance is provided to help maintain the integrity of Colorcoat Aquatite® and ensure long lasting watertight results every time.



Overview

Colorcoat Aquatite® is manufactured by Tata Steel in Shotton, North Wales.

Specifically developed for industrial, residential, commercial and agricultural applications, the water resistant membrane offers the perfect, hassle-free rainwater management solution.

Suitable for gutters, flashings, roofing and parapet copings, the non-permeable membrane is available in a range of thicknesses.

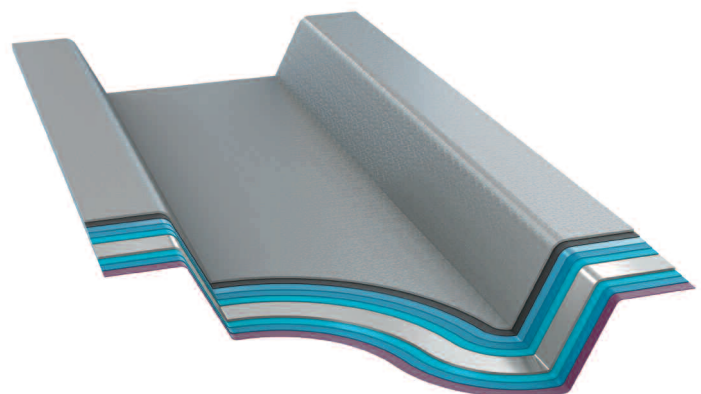
Supplied with a smooth finish or our certified slip resistant emboss, Colorcoat Aquatite® provides excellent colour stability and resistance to UV light, heat, harsh weather conditions and general wear and tear.

Colorcoat Aquatite® can be installed using established 'single ply' PVC heat seaming techniques.








Joints are straightforward and can be produced on-site using simple hot air welding techniques that give excellent watertight results. This also eliminates the need for mechanical fixings and sealants, which can be messy and costly, and it ensures that the finished installation looks, and remains looking good, for many years.

Key features

- Guaranteed for 25 years.
- Robust and highly durable.
- Available with a slip resistant emboss.
- Factory-bonded to a Colorcoat® pre-finished steel substrate.
- Fire resistance performance tested to BS 476 Part 3 and ENV 1187 test 4. Achieves national class EXT.F.AB and European Class Broof(t4).
- Supplied as standard in grey, with excellent colour stability.
- Simple and easy to fabricate.



Key

 PVC membrane	 Adhesive	 Primer	 Pre-treatment
 Zinc	 Substrate	 Backing coat (bondable)	

Colorcoat Aquatite®

Welding recommendations



- After the gutter sections have been installed and mechanically jointed the joints to the gutters must be hot air welded immediately before the membrane otherwise it can become contaminated. Welding should also take place prior to any roofing sheets being installed as this will give the best access to the joints and ensure that there are no obstructions.
- If the gutters are allowed to get dirty the weld areas must be cleaned thoroughly using a PVC cleaner prior to welding. Furthermore, the mechanical joint must be covered with a self-adhesive foil expansion tape to protect areas that are not to be welded.

- PVC membranes weld at temperatures greater than 400°C. Once the gun is up to temperature carry out a weld test on a piece of folded PVC membrane cut off the jointing roll. This is done by inserting the heat nozzle between the two surfaces and then slowly removing the nozzle while pressing the two surfaces together with the thumb and forefinger. When the nozzle has been completely removed try to prise the two surfaces apart. If this is not possible then the two pieces of membrane have been fused together successfully and you are ready to begin welding the joints.
- Cut a length of the Colorcoat Aquatite® jointing membrane long enough to cover the total joint. Spot-weld the Colorcoat Aquatite® membrane over the gutter joint ensuring the centre of the membrane is over the centre of the joint. To do this, place the nozzle between the gutter and jointing membrane and heat weld at approximately 200mm centres.

- The minimum heat weld required during any installation is 40mm per side of the joint and this is performed in two steps. The first step is to insert a 'back weld' which is a weld of between 10mm - 15mm placed at the rear of the lap. This is a vital part of the process as it ensures that when the final weld is performed, all the hot air is contained within the lap and does not escape. The second weld or 'secure weld' is carried out in a methodical uniform manner using even pressure on the roller and steady speed of the nozzle. At any angle on the joint always start the welding procedure from this point and work away using a brass penny roller to ensure the weld is completed at the angle.

www.tatasteelconstruction.com

Tata Steel

Shotton Works, Deeside,
Flintshire, CH5 2NH. United Kingdom

For more information on Colorcoat Aquatite® or Colorsteels please contact:

General Enquires: T: +44 (0) 1244 892881

Technical Enquires: T: +44 (0) 1244 892898

E: colorsteels@tatasteel.com

Trademarks of Tata Steel UK Limited

Aquatite is a registered trademark of Tata Steel.

While care has been taken to ensure that the information contained in this publication is accurate, neither Tata Steel, nor its subsidiaries, accept responsibility or liability for errors or for information which is found to be misleading.

Before using products or services supplied or manufactured by Tata Steel and its subsidiaries, customers should satisfy themselves as to their suitability.